

**The Carnes Model AVWB** is available as a basic control unit with hot water reheat and open end discharge, with an optional sound attenuator module, and optional multi-discharge adaptor module. This unit offers low pressure drop, low sound levels and valve characteristics which create stable control conditions within the conditioned space.

*Other Features Include:*

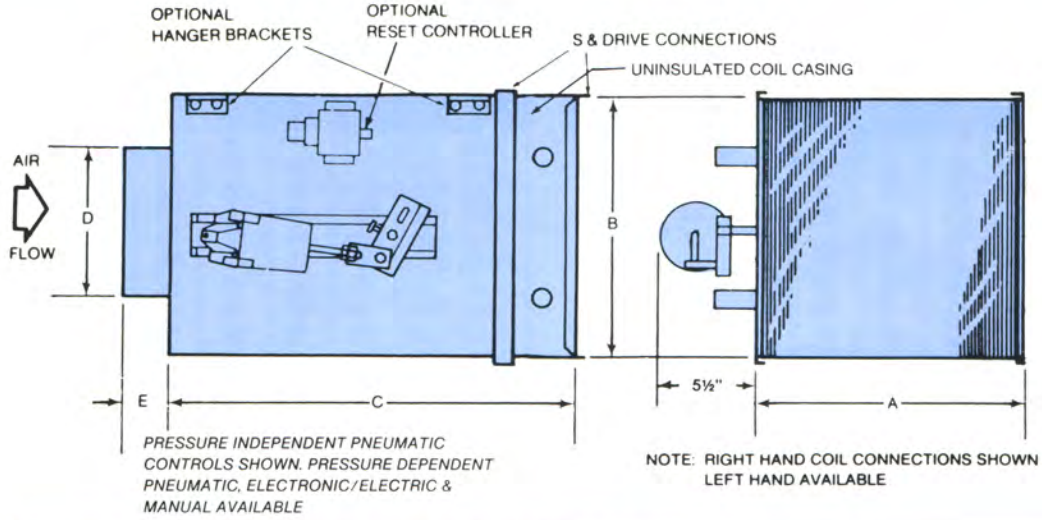
- Air flow capacities from full shut-off to 8,000 CFM.
- Pneumatic, electric, electronic or manual damper control.
- Open-end discharge units are provided with S and drive connection for easy installation.
- Thermally and acoustically insulated casings (hot water coil casing is uninsulated).
- Multi-discharge adaptors have round outlet connections with integral balancing dampers.
- Air flow sensor at inlet of unit.
- Optional pressure independent control.
- Optional hanger brackets.
- Optional fire rated tubing.
- Optional foil coated insulation (hospital, laboratory, etc. applications).
- Optional controls enclosure for electric controls.
- Optional access panel.

*Available Modules:*

- Basic control unit with hot water coil—Model AVWB (See Section 3 for coil data).
- Sound attenuator—Model AXAA (See Section 5 - Accessories).
- Multi-discharge adaptor—Model AXMA (See Section 5 - Accessories).

2

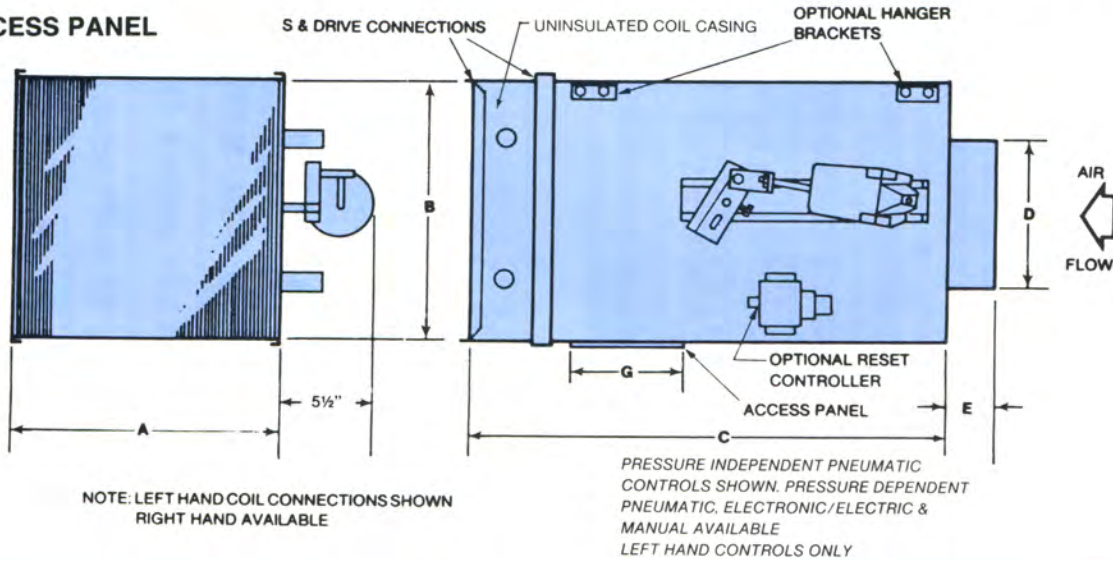
## Dimensional Data—Model AVWB-Throttling Unit with Hot Water Reheat



DIMENSIONS LISTED IN INCHES											
UNIT SIZE	A	B	1 Row C	2 Row C	D	E	O.D.Coil/Conn		*Weight		
							w/1 Row	w/2 Row	w/1 Row	w/2 Row	
02	10	8	14 1/4	15 3/4	5	2 3/8	1/2	1/2	12	13	
04	10	8	14 1/4	15 3/4	6	2 3/8	1/2	1/2	12	13	
06	12	10	16 1/4	17 3/4	7	2 3/8	1/2	1/2	17	19 1/2	
08	14	12	18 1/4	19 3/4	8	2 3/8	1/2	5/8	21	24	
12	16	14	20 1/4	21 3/4	10	2 3/8	1/2	5/8	29	34	
16	18	16	22 1/4	23 3/4	12	2 3/8	1/2	5/8	34	40	
24	20	18	24 1/4	25 3/4	14	2 3/8	5/8	7/8	41 1/2	47 1/2	
32	24	18	24 1/4	25 3/4	16	2 3/8	5/8	7/8	46 1/2	53	
45	32	18	24 1/4	25 3/4	16 x 18	3 3/8	5/8	7/8	59	68	
60	32	18	24 1/4	25 3/4	16 x 24	3 3/8	5/8	7/8	59	68	

\*Less Controls

### w/ACCESS PANEL



DIMENSIONS LISTED IN INCHES											
UNIT SIZE	A	B	1 Row C	2 Row C	D	E	G	O.D.Coil/Conn		*Weight	
								w/1 Row	w/2 Row	w/1 Row	w/2 Row
02	10	8	37 3/8	39 3/8	5	2 3/8	9 1/2	1/2	1/2	17	18
04	10	8	37 3/8	39 3/8	6	2 3/8	9 1/2	1/2	1/2	17	18
06	12	10	37 3/8	39 3/8	7	2 3/8	11 1/2	1/2	1/2	22	25
08	14	12	37 3/8	39 3/8	8	2 3/8	13 1/2	1/2	5/8	26	29
12	16	14	20 1/4	21 3/4	10	2 3/8	13 1/2	1/2	5/8	30	35
16	18	16	22 1/4	23 3/4	12	2 3/8	13 1/2	1/2	5/8	35	41
24	20	18	24 1/4	25 3/4	14	2 3/8	13 1/2	5/8	7/8	44	50
32	24	18	24 1/4	25 3/4	16	2 3/8	13 1/2	5/8	7/8	49	56
45	32	18	24 1/4	25 3/4	16x18	3 3/8	13 1/2	5/8	7/8	61	70
60	32	18	24 1/4	25 3/4	16x24	3 3/8	13 1/2	5/8	7/8	61	70

\*Less Controls

Refer to Section 3 of this catalog for specific information on hot water coils.



