

#### COMBINATION DIMENSIONS

Standard and (Metric)

CARNES COMPANY, 448 S. Main Street, P. O. Box 930040, Verona, WI. 53593-0040 Phone: 608/845-6411 Fax: 608/845-6470

#### SLOT PATTERN ADJUSTMENTS



PERPENDICULAR



PARALLEL LEFT



PARALLEL RIGHT



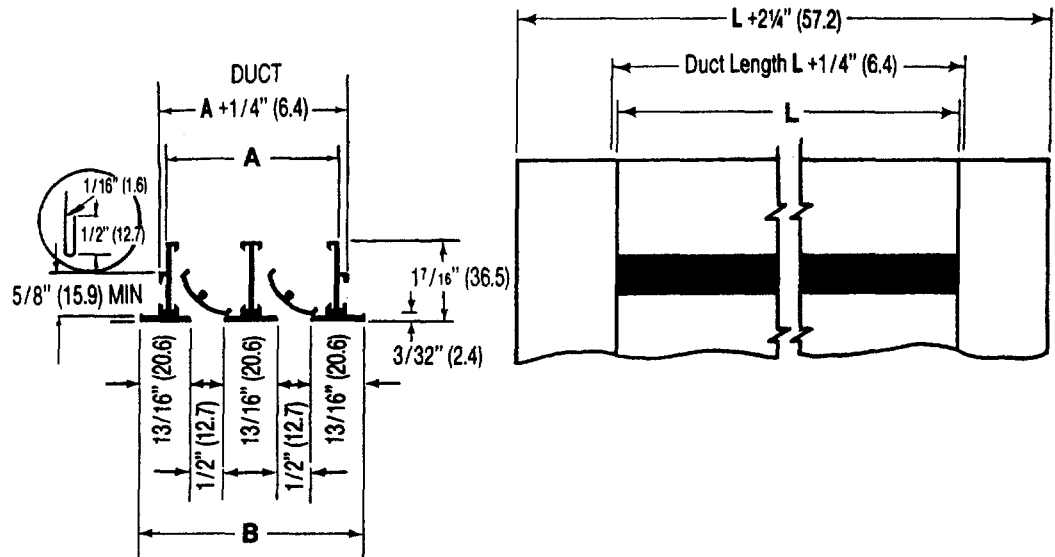
BLANK-OFF



PARALLEL ONE-WAY  
MULTIPLE SLOT



PARALLEL TWO-WAY  
OPPOSITE



#### DIMENSIONS LISTED IN INCHES (Millimeters)

Dim.	No. of Slots							
	1	2	3	4	5	6	7	8
A	1-3/8 (34.9)	2-11/16 (68.3)	4 (101.6)	5-5/16 (134.9)	6-5/8 (168.3)	7-15/16 (201.6)	9-1/4 (235.0)	10-9/16 (242.9)
B	2-1/8 (28.6)	3-7/16 (87.3)	4-3/4 (120.7)	6-1/16 (154.0)	7-3/8 (187.3)	8-11/16 (220.7)	10 (254.0)	11-5/16 (287.3)

#### NOTES:

1. Maximum length "L" for one piece construction is 72" (1829).
2. For butted units, allow 1/32" (.8) space between sections to provide for thermal expansion.