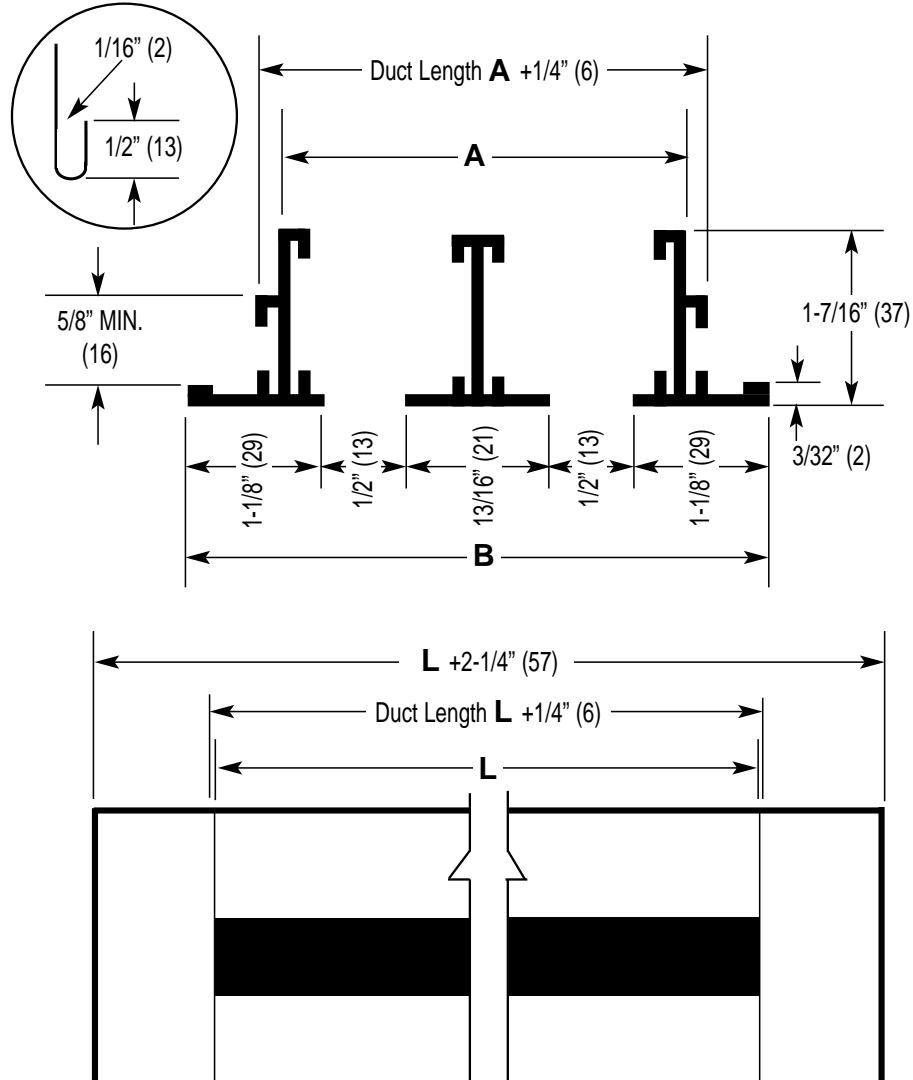


**IP [English] Dimensions**  
*SI (Metric) In Parentheses*

CARNES COMPANY, 448 S. Main St., P. O. Box 930040, Verona, WI. 53593-0040 Phone: 608/845-6411 Fax: 608/845-6470 E-Mail: carnes@carnes.com www.carnes.com



Dim.	Number of Slots							
	1	2	3	4	5	6	7	8
A	1-3/8" (35)	2-11/16" (68)	4" (102)	5-5/16" (135)	6-5/8" (168)	7-15/16" (202)	9-1/4" (235)	10-9/16" (269)
B	2-3/4" (70)	4-1/16" (103)	5-3/8" (137)	6-11/16" (170)	8" (203)	9-5/16" (237)	10-5/8" (270)	11-15/16" (303)

**NOTES:**

1. Maximum length "L" for one piece construction is 72" (1829mm).
2. For butted units, allow 1/32" (1mm) space between sections to provide for thermal expansion.