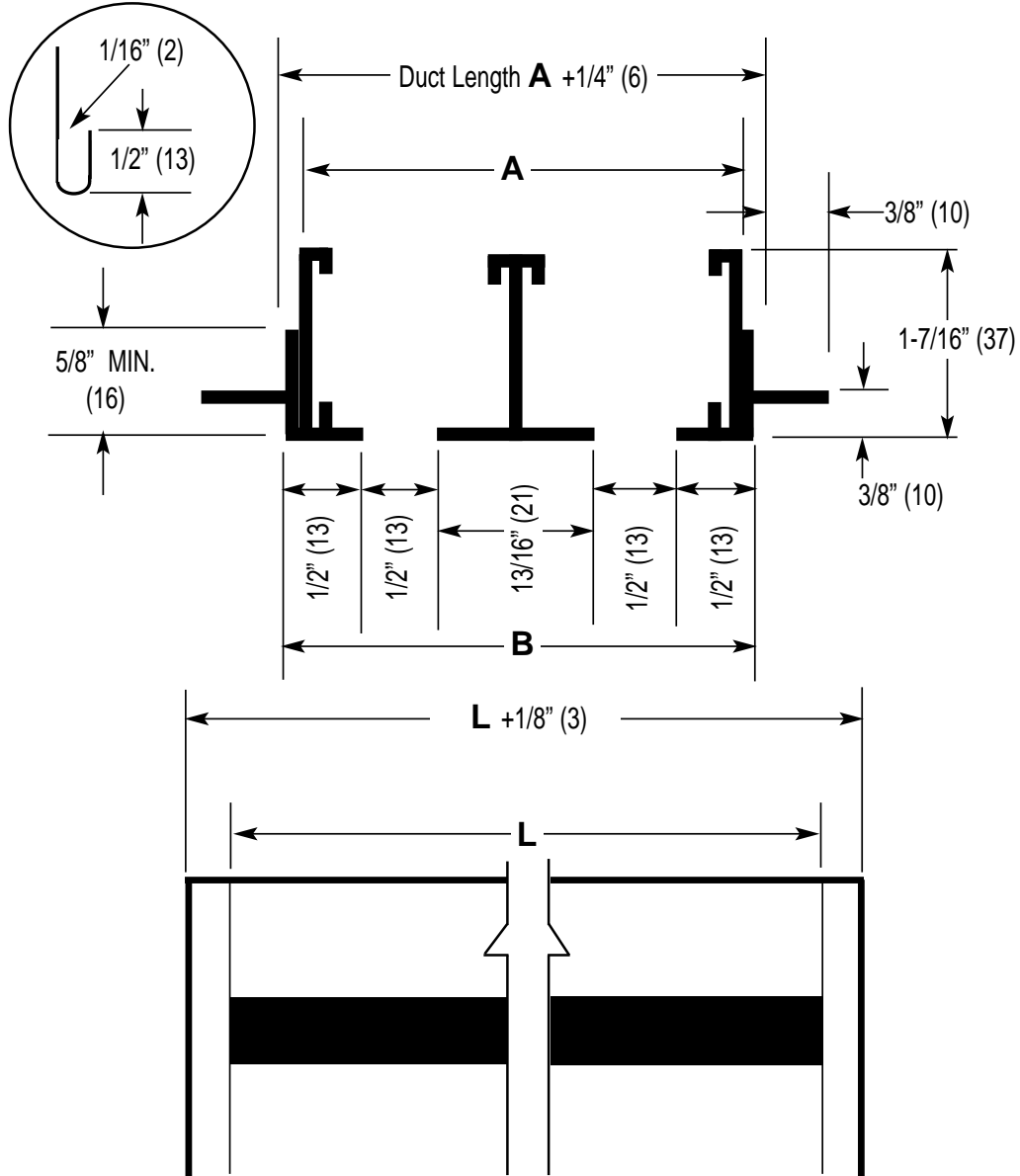


**IP [English] Dimensions**  
*SI (Metric) In Parentheses*

CARNES COMPANY, 448 S. Main St., P. O. Box 930040, Verona, WI. 53593-0040 Phone: 608/845-6411 Fax: 608/845-6470 E-Mail: carnes@carnes.com www.carnes.com



| Dim.     | Number of Slots |                  |                 |                  |                 |                   |                 |                    |
|----------|-----------------|------------------|-----------------|------------------|-----------------|-------------------|-----------------|--------------------|
|          | 1               | 2                | 3               | 4                | 5               | 6                 | 7               | 8                  |
| <b>A</b> | 1-3/8"<br>(35)  | 2-11/16"<br>(68) | 4"<br>(102)     | 5-5/16"<br>(135) | 6-5/8"<br>(168) | 7-15/16"<br>(202) | 9-1/4"<br>(235) | 10-9/16"<br>(268)  |
| <b>B</b> | 1-1/2"<br>(38)  | 2-13/16"<br>(71) | 4-1/8"<br>(105) | 5-7/16"<br>(138) | 6-3/4"<br>(172) | 8-1/16"<br>(205)  | 9-3/4"<br>(248) | 10-11/16"<br>(272) |

- NOTES:**
1. Duct length is "L" plus 1/4" (6mm).
  2. Order units 1/8" (3mm) shorter than grid size.
  3. Units have flat end caps that add 1/8" (3mm) to unit length.
  4. Maximum length "L" for one piece construction is 72" (1829mm).