

MODEL CHGB CHANNEL-AIRE EXTRUDED ALUMINUM SLOT TYPE DIFFUSER SPLINE BORDER, 1/2" (12.7) SLOT

COMBINATION DIMENSIONS

Standard and (Metric)

CARNES COMPANY, 448 S. Main Street, P. O. Box 930040, Verona, WI. 53593-0040 Phone: 608/845-6411 Fax: 608/845-6470

SLOT PATTERN ADJUSTMENTS



PERPENDICULAR



PARALLEL LEFT



PARALLEL RIGHT



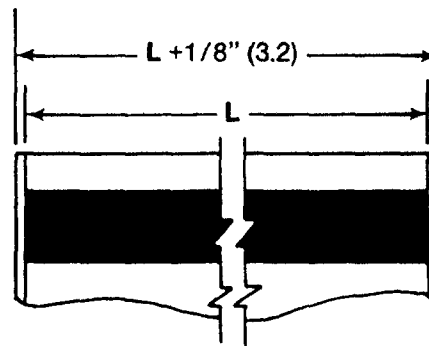
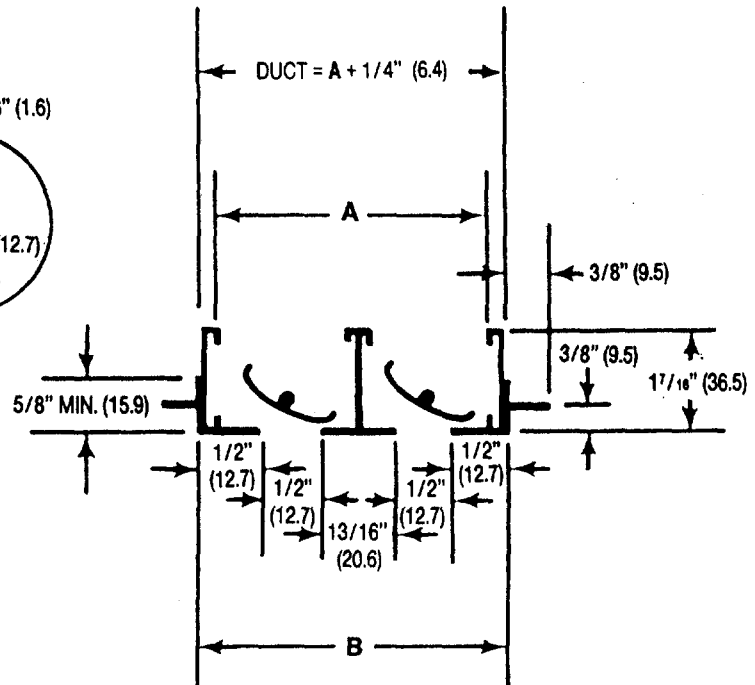
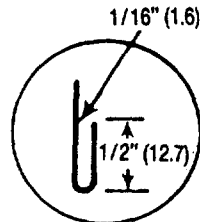
BLANK OFF



PARALLEL ONE-WAY
MULTIPLE SLOT



PARALLEL TWO-WAY
OPPOSITE



DIMENSION LISTED IN INCHES (millimeters)

Dim.	NUMBER OF SLOTS							
	1	2	3	4	5	6	7	8
A	1 ³ / ₈ (34.9)	2 ¹¹ / ₁₆ (68.3)	4 (101.6)	5 ⁵ / ₁₆ (134.9)	6 ⁵ / ₈ (168.3)	7 ¹⁵ / ₁₆ (201.6)	9 ¹ / ₄ (235.0)	10 ⁹ / ₁₆ (268.3)
B	1 ¹ / ₂ (38.1)	2 ¹³ / ₁₆ (71.4)	4 ¹ / ₈ (104.8)	5 ⁷ / ₁₆ (138.1)	6 ³ / ₄ (171.5)	8 ¹ / ₁₆ (204.9)	9 ³ / ₄ (247.7)	10 ¹¹ / ₁₆ (271.5)

NOTES:

1. Duct length is "L" + 1/4" (6.4).
2. Order units 1/8" (3.2) shorter than grid size.
3. Units have flat end caps that add 1/8" (3.2) to unit length.
4. Maximum length "L" for one piece construction is 72" (1829).