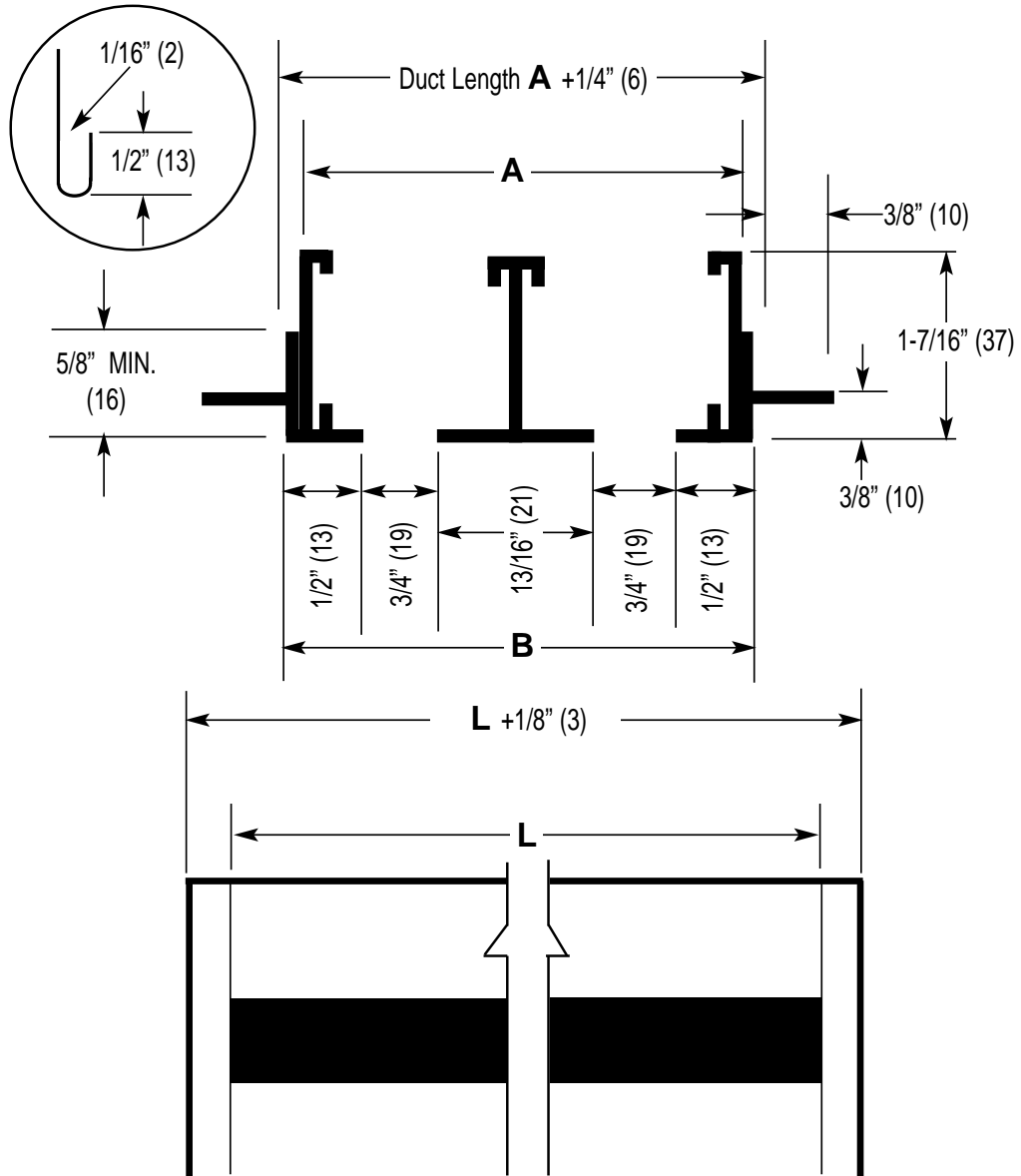


**IP [English] Dimensions**  
*SI (Metric) In Parentheses*

CARNES COMPANY, 448 S. Main St., P. O. Box 930040, Verona, WI. 53593-0040 Phone: 608/845-6411 Fax: 608/845-6470 E-Mail: carnes@carnes.com www.carnes.com



Dim.	Number of Slots							
	1	2	3	4	5	6	7	8
<b>A</b>	1-5/8" (45)	3-13/16" (84)	4-3/4" (121)	6-5/16" (160)	7-5/8" (200)	9-7/16" (240)	11" (279)	12-9/16" (319)
<b>B</b>	1-3/4" (45)	3-5/16" (84)	4-7/8" (124)	6-7/16" (164)	8" (203)	9-9/16" (244)	11-1/8" (283)	12-11/16" (322)

- NOTES:**
1. Duct length is "L" plus 1/4" (6mm).
  2. Order units 1/8" (3mm) shorter than grid size.
  3. Units have flat end caps that add 1/8" (3mm) to unit length.
  4. Maximum length "L" for one piece construction is 72" (1829mm).