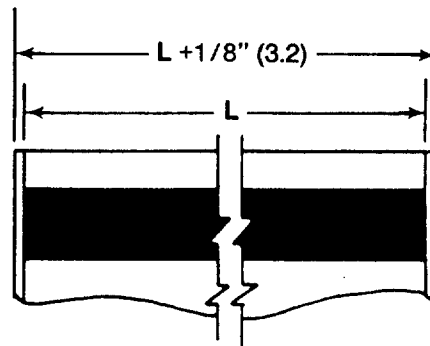
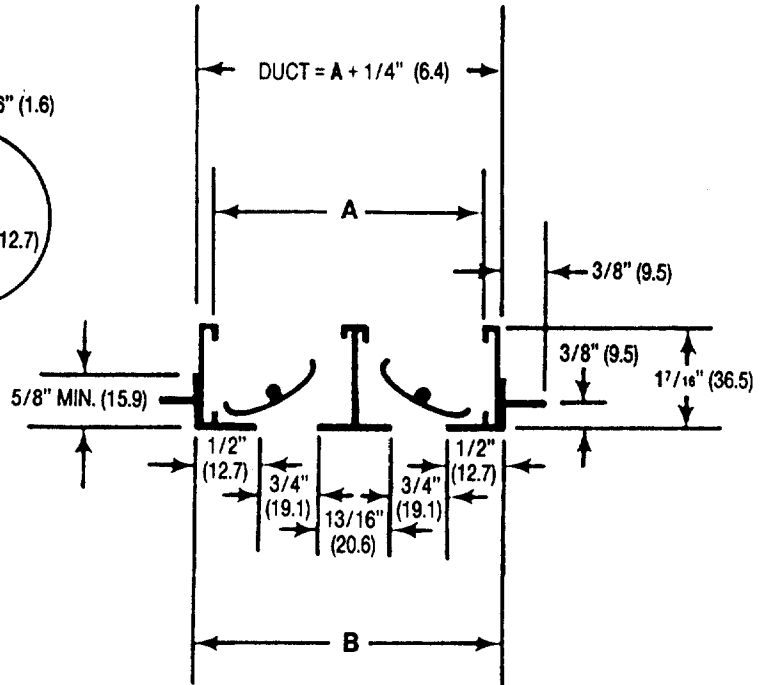
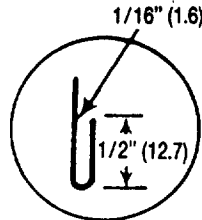
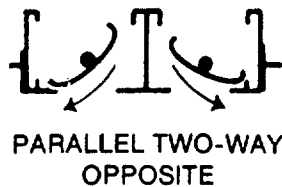
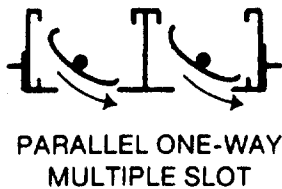
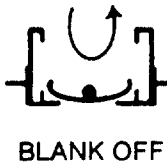


### MODEL CHHB CHANNEL-AIRE EXTRUDED ALUMINUM SLOT TYPE DIFFUSER SPLINE BORDER, 3/4" (19.1) SLOT

#### COMBINATION DIMENSIONS Standard and (Metric)

CARNES COMPANY, 448 S. Main Street, P. O. Box 930040, Verona, WI. 53593-0040 Phone: 608/845-6411 Fax: 608/845-6470

#### SLOT PATTERN ADJUSTMENTS



#### DIMENSION LISTED IN INCHES (millimeters)

Dim.	NUMBER OF SLOTS							
	1	2	3	4	5	6	7	8
A	1 <sup>5</sup> / <sub>8</sub> (44.5)	3 <sup>13</sup> / <sub>16</sub> (84.1)	4 <sup>3</sup> / <sub>4</sub> (120.7)	6 <sup>5</sup> / <sub>16</sub> (160.3)	7 <sup>5</sup> / <sub>8</sub> (200.0)	9 <sup>7</sup> / <sub>16</sub> (239.7)	11 (279.4)	12 <sup>9</sup> / <sub>16</sub> (319.1)
B	1 <sup>3</sup> / <sub>4</sub> (44.5)	3 <sup>5</sup> / <sub>16</sub> (84.1)	4 <sup>7</sup> / <sub>8</sub> (123.8)	6 <sup>7</sup> / <sub>16</sub> (163.5)	8 (203.2)	9 <sup>9</sup> / <sub>16</sub> (243.9)	11 <sup>1</sup> / <sub>8</sub> (282.6)	12 <sup>11</sup> / <sub>16</sub> (322.3)

#### NOTES:

1. Duct length is "L" + 1/4" (6.4).
2. Order units 1/8" (3.2) shorter than grid size.
3. Units have flat end caps that add 1/8" (3.2) to unit length.
4. Maximum length "L" for one piece construction is 72" (1829).