

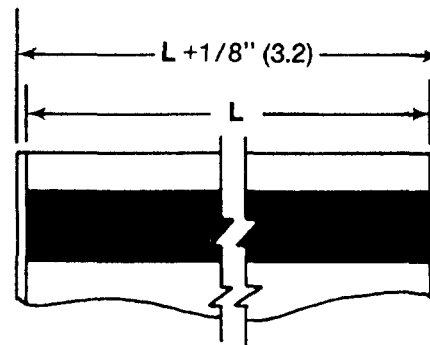
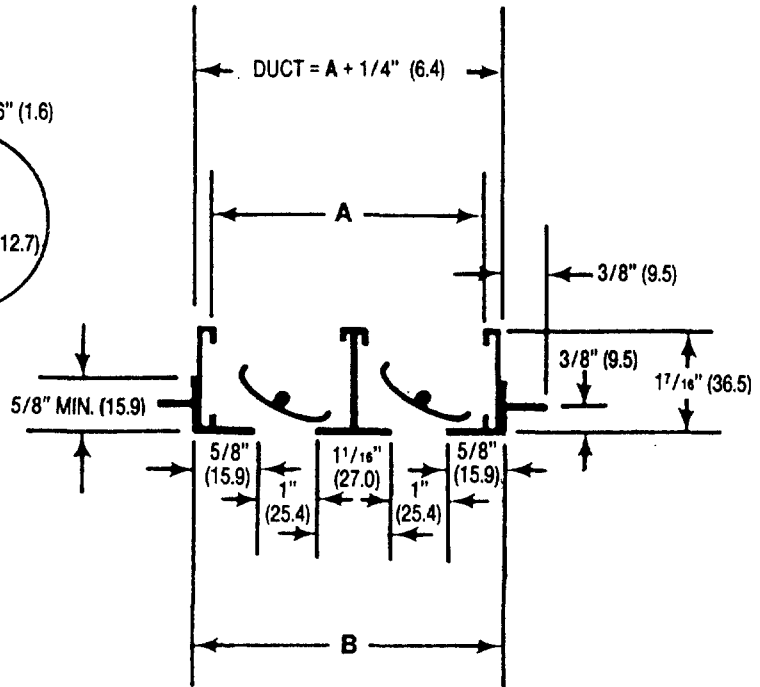
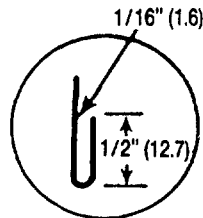
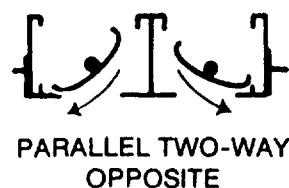
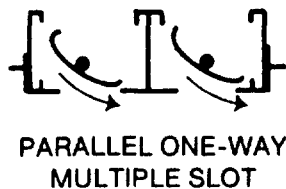
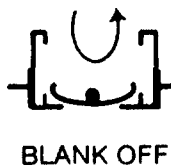
## SPECIFICATION SHEET

### MODEL CHJB CHANNEL-AIRE EXTRUDED ALUMINUM LOT TYPE DIFFUSER SPLINE BORDER, 1" (25.4) SLOT

#### COMBINATION DIMENSIONS Standard and (Metric)

CARNES COMPANY, 448 S. Main Street, P. O. Box 930040, Verona, WI. 53593-0040 Phone: 608/845-6411 Fax: 608/845-6470

#### SLOT PATTERN ADJUSTMENTS



#### DIMENSION LISTED IN INCHES (millimeters)

| Dim. | NUMBER OF SLOTS                         |   |  |   |   |  |   |   |
|------|---|---|--|---|---|--|---|---|
|      | 1                                       | 2   | 3  | 4   | 5   | 6  | 7   | 8   |
| A    | 2 <sup>1</sup> / <sub>8</sub><br>(54.0) | 4 <sup>3</sup> / <sub>16</sub><br>(106.4) | 6 <sup>1</sup> / <sub>4</sub><br>(158.8) | 8 <sup>5</sup> / <sub>16</sub><br>(211.1) | 10 <sup>3</sup> / <sub>8</sub><br>(263.5) | 12 <sup>7</sup> / <sub>16</sub><br>(315.9) | 14 <sup>1</sup> / <sub>2</sub><br>(368.3) | 16 <sup>9</sup> / <sub>16</sub><br>(420.7)  |
| B    | 2 <sup>1</sup> / <sub>4</sub><br>(57.2) | 4 <sup>5</sup> / <sub>16</sub><br>(109.5) | 6 <sup>3</sup> / <sub>8</sub><br>(161.9) | 8 <sup>7</sup> / <sub>16</sub><br>(214.3) | 10 <sup>1</sup> / <sub>2</sub><br>(266.7) | 12 <sup>9</sup> / <sub>16</sub><br>(319.1) | 14 <sup>5</sup> / <sub>8</sub><br>(371.5) | 16 <sup>11</sup> / <sub>16</sub><br>(423.9) |

#### NOTES:

1. Duct length is "L" + 1/4" (6.4).
2. Order units 1/8" (3.2) shorter than grid size.
3. Units have flat end caps that add 1/8" (3.2) to unit length.
4. Maximum length "L" for one piece construction is 72" (1829).