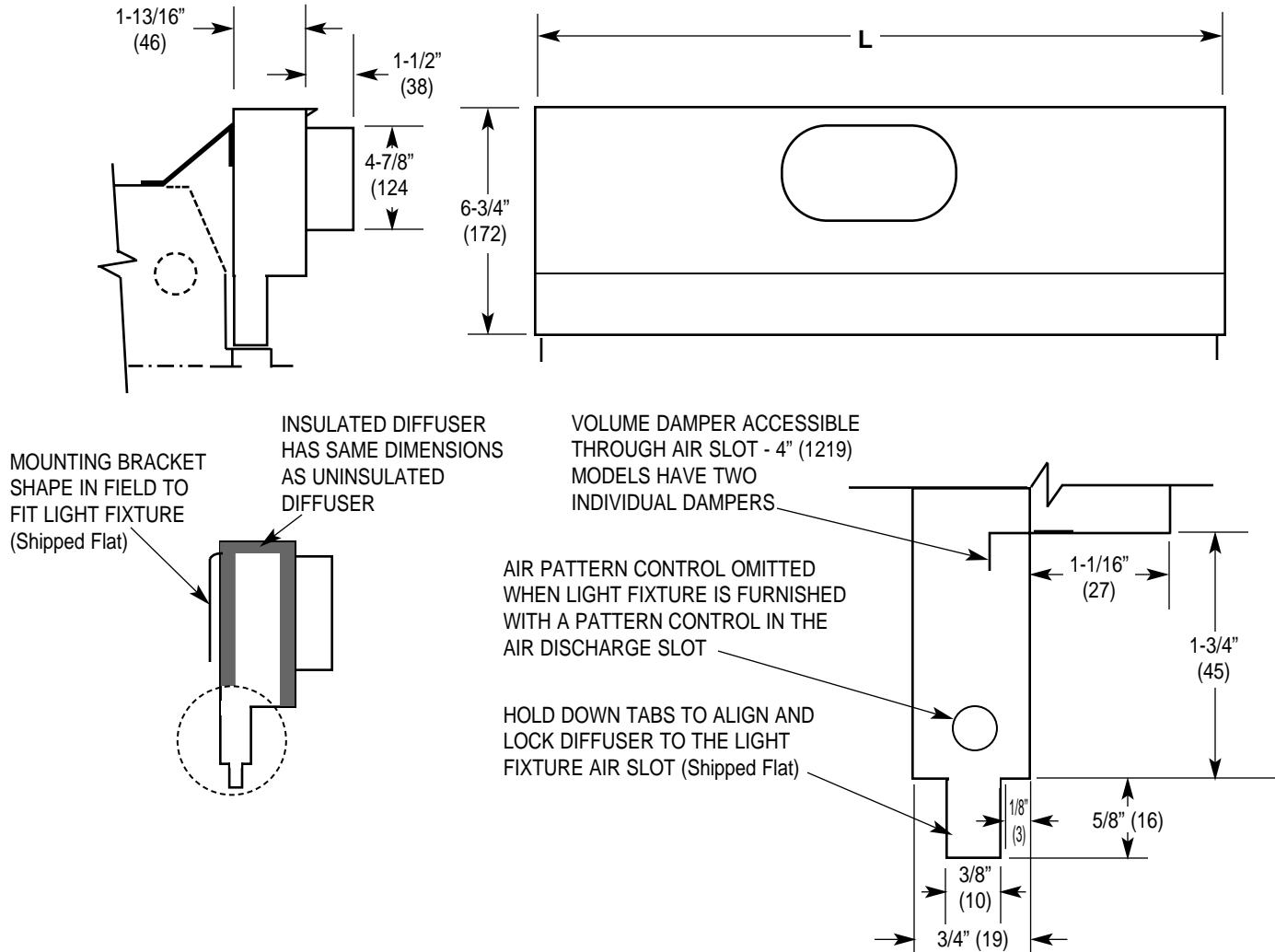


Imperial [IP] Dimensions
Metric (SI) in Parentheses

CARNES COMPANY 448 S. Main St., P. O. Box 930040, Verona, WI 53593-0040 Phone: (608)845-6411 Fax: (608)845-6504 www.carnes.com



Notes:

- Diffusers are available as supply or return units regressed or flush air handling light fixture.
- MATERIAL: Galvannealed steel. Exposed slot area painted flat black.
- SIDE INLETS: 5" (127) and 6" (152) Oval. Other sizes available on request.
- HEIGHT: 6-3/4" (172) Standard. Other heights available on request. Ceiling clearance required is 7" (178) plus amount troffer is regressed above ceiling

OPTIONS (Specify)

- ☐ Uninsulated.
- ☐ 1/2" (13) Internal Insulation.
- ☐ 1/2" (13) FSK External Insulation.

DIMENSIONS LISTED IN INCHES (Millimeters)

Fixture Length	Air Diffuser Length	Specify Light Fixture Mfg. and Model Number
2 FOOT	20" (508)	
3 FOOT	27" (686)	
4 FOOT	40" (1016)	

Note: Standard diffuser dimensions are stated. Actual length will vary with light fixture manufacturer. To insure compatibility, list light fixture manufacturer and model number.