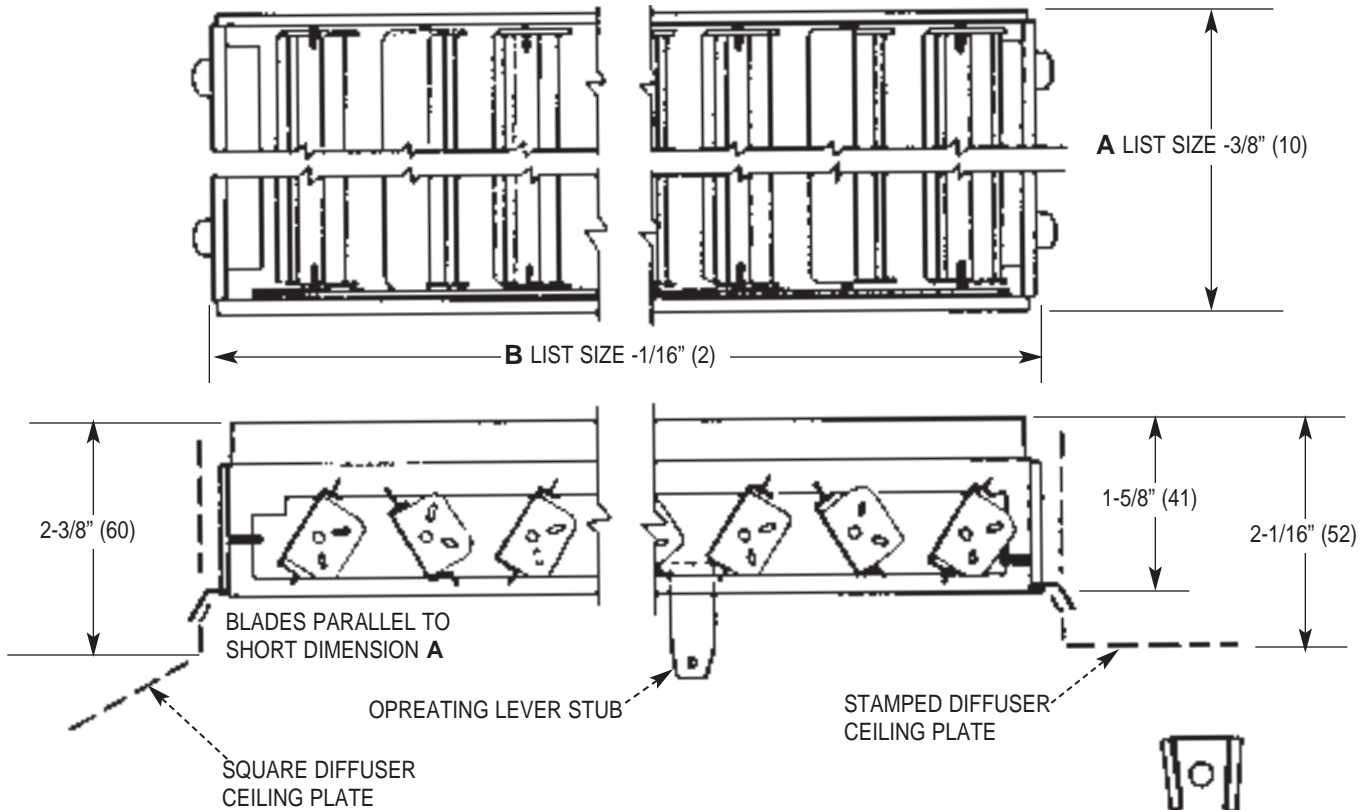


MODEL KXKA STEEL OPPOSED BLADE DAMPER for STEEL SQUARE and RECTANGULAR DIFFUSER and SQUARE NECK STAMPED PERFORATED DIFFUSERS

Imperial [IP] Dimensions
Metric (SI) in Parentheses

CARNES COMPANY 448 S. Main St., P. O. Box 930040, Verona, WI 53593-0040 Phone: (608)845-6411 Fax: (608)845-6470 www.carnes.com



DIMENSIONS LISTED IN INCHES (Millimeters)		
SIZE A x B	SIZE A x B	SIZE A x B
6 x 6 (152 x 152)	9 x 21 (229 x 533)	15 x 21 (381 x 533)
6 x 9 (152 x 229)	9 x 24 (229 x 610)	15 x 24 (381 x 610)
6 x 12 (152 x 305)	10 x 10 (254 x 254)*	16 x 16 (406 x 406)*
6 x 15 (152 x 381)	10 x 22 (254 x 559)*	18 x 18 (457 x 457)
6 x 18 (152 x 457)	12 x 12 (305 x 305)	18 x 21 (457 x 533)
6 x 21 (152 x 533)	12 x 15 (305 x 381)	18 x 24 (457 x 610)
6 x 24 (152 x 610)	12 x 18 (305 x 457)	21 x 21 (533 x 533)
8 x 8 (203 x 203)*	12 x 21 (305 x 533)	21 x 24 (533 x 610)
9 x 9 (229 x 229)	12 x 24 (305 x 610)	22 x 22 (559 x 559)*
9 x 12 (229 x 305)	14 x 14 (356 x 356)*	24 x 24 (610 x 610)
9 x 15 (229 x 381)	15 x 15 (381 x 381)	
9 x 18 (229 x 457)	15 x 18 (381 x 457)	

*For use on stamped perforated ONLY.

Notes:

1. Model KXKAS — Blades parallel to short dimension.
2. Model KXKAL — Blades parallel to long distance.
3. For square diffusers with blow patterns 12 and 22 use Model KXKAL with long blades.
4. Standard finish is #04 gray electrocoat enamel.

