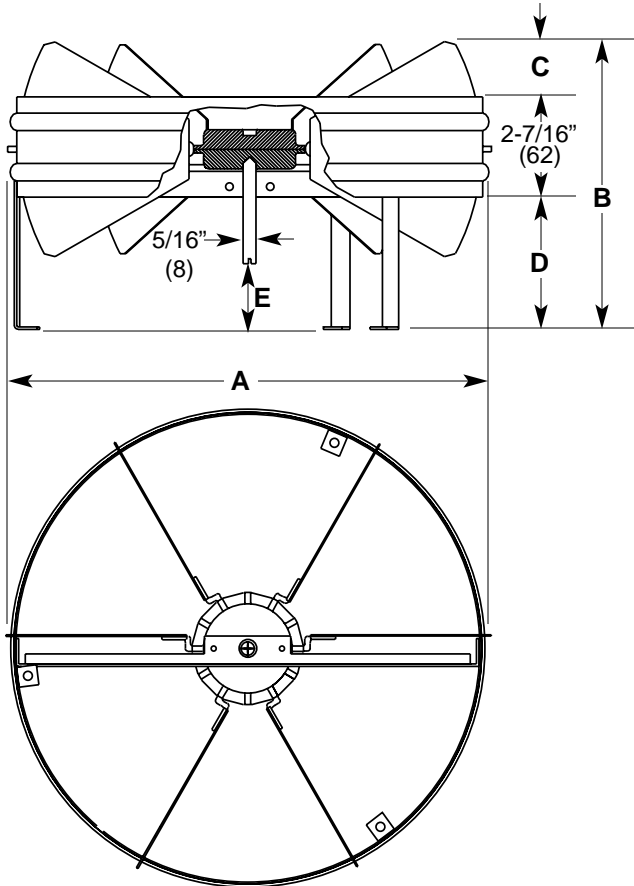


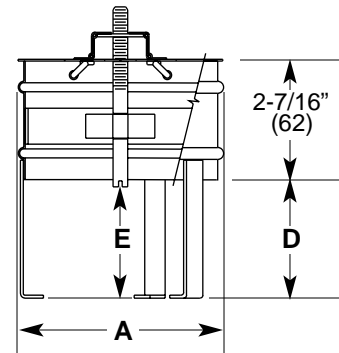
**IP [English] Dimensions**  
*SI (Metric) In Parentheses*

CARNES COMPANY, 448 S. Main St., P. O. Box 930040, Verona, WI. 53593-0040 Phone: 608/845-6411 Fax: 608/845-6470 E-Mail: carnes@carnes.com www.carnes.com

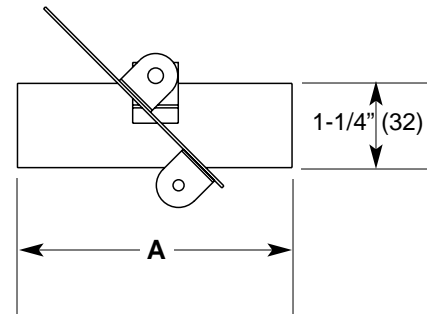
**Sizes 8" through 24"**



**Sizes 5", 6" and 7"**



**Size 4"**



**NOTE:**  
 Size 4 has no operator

Nominal Size	Outside Diameter Dia. A	Max. Height Dim. B	Max. Blade Proj. Dim. C	Leg Length Dim. D	Operator Height Dim. E	Blade Qty
4" (102)	3-7/8" (98)	---	---	---	---	1
5" (127)	4-11/16" (119)	6" (152)	1-1/16" (27)	2-1/2" (64)	1" (25)	2
6" (152)	5-11/16" (144)	6-1/2" (165)	1-9/16" (40)	2-1/2" (64)	1" (25)	2
7" (178)	6-11/16" (170)	7" (178)	2-1/16" (52)	2-1/2" (64)	1" (25)	2
8" (203)	7-5/8" (194)	6-1/4" (159)	9/16" (14)	3-1/4" (83)	1-3/4" (44)	6
10" (254)	9-11/16" (246)	6-3/4" (171)	1-1/16" (27)	3-1/4" (83)	1-3/4" (44)	6
12" (305)	11-3/4" (298)	7-1/4" (184)	1-9/16" (40)	3-1/4" (83)	1-3/4" (44)	6
14" (356)	13-11/16" (348)	6-3/16" (157)	1/2" (13)	3-1/4" (83)	1-3/4" (44)	12
16" (406)	15-13/16" (402)	7-7/16" (189)	3/4" (19)	4-1/4" (108)	1/4" (6)	12
18" (457)	17-3/4" (451)	7-11/16" (195)	1" (25)	4-1/4" (108)	1/4" (6)	12
20" (508)	19-13/16" (503)	7-15/16" (202)	1-1/4" (32)	4-1/4" (108)	1/4" (6)	12
24" (610)	23-13/16" (605)	7-15/16" (202)	1-1/2" (38)	4-1/4" (108)	1/4" (6)	12

**Notes:**

- Standard finish is electrocoat acrylic baked enamel. Other finishes are available upon request.
- Standard color is #04 gray. Other colors are available upon request.
- Metric dimensions are given in millimeters.
- Construction is steel.