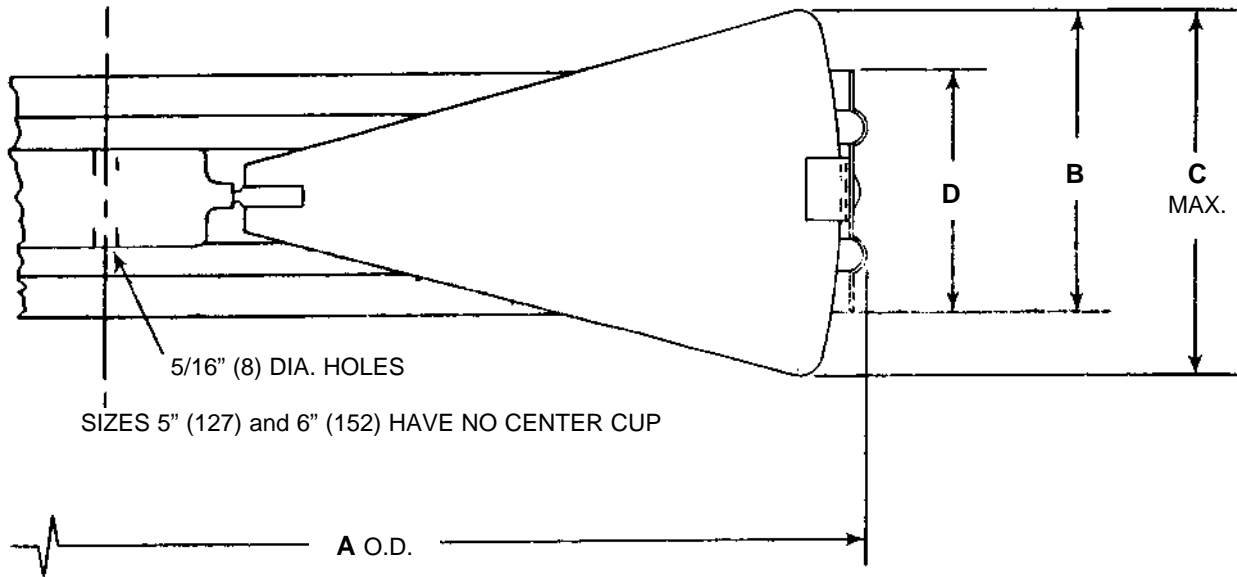


Imperial [IP] Dimensions
Metric (SI) in Parentheses

CARNES COMPANY 448 S. Main St., P. O. Box 930040, Verona, WI 53593-0040 Phone: (608)845-6411 Fax: (608)845-6504 www.carnes.com



DIMENSIONS LISTED IN INCHES (In Millimeters)						
Model	Size	A	B	C	D	Blades
KXNA	5 (127)	4-11/16 (119)	1-7/16 (37)	1-11/16 (42)	1-3/16 (30)	8
KXNA	6 (152)	5-11/16 (145)	1-5/8 (41)	2-1/16 (52)	1-3/16 (30)	8
KXNA	7 (178)	6-11/16 (170)	2-1/8 (54)	2-7/16 (62)	1-3/16 (30)	8
KXNA	8 (203)	7-5/8 (194)	3 (76)	3-1/2 (89)	2-7/16 (62)	6
KXNA	10 (254)	9-11/16 (246)	3-1/2 (89)	4-1/2 (114)	2-7/16 (62)	6
KXNA	12 (305)	11-3/4 (299)	3 (102)	5-1/2 (140)	2-7/16 (62)	6
KXNA	14 (356)	13-11/16 (348)	2-15/16 (75)	3-3/8 (86)	2-7/16 (62)	12
KXNA	16 (406)	15-13/16 (402)	3-3/16 (81)	3-7/8 (98)	2-7/16 (62)	12
KXNA	18 (457)	17-3/4 (451)	3-7/16 (87)	4-3/8 (111)	2-7/16 (62)	12
KXNA	20 (508)	19-13/16 (503)	3-11/16 (94)	4-15/16 (125)	2-7/16 (62)	12
KXNA	24 (610)	23-11/16 (602)	4-3/16 (106)	5-15/16 (151)	2-7/16 (62)	12
KXNA	28 (711)	27-11/16 (703)	4-11/16 (119)	6-15/16 (176)	2-7/16 (62)	12
KXNA	32 (813)	31-5/8 (803)	5-1/4 (133)	8 (203)	2-7/16 (62)	12
KXNA	36 (914)	35-5/8 (905)	5-3/4 (146)	9 (229)	2-7/16 (62)	12

NOTE: 1. Standard finish is #04 Gray, electrocoat enamel.