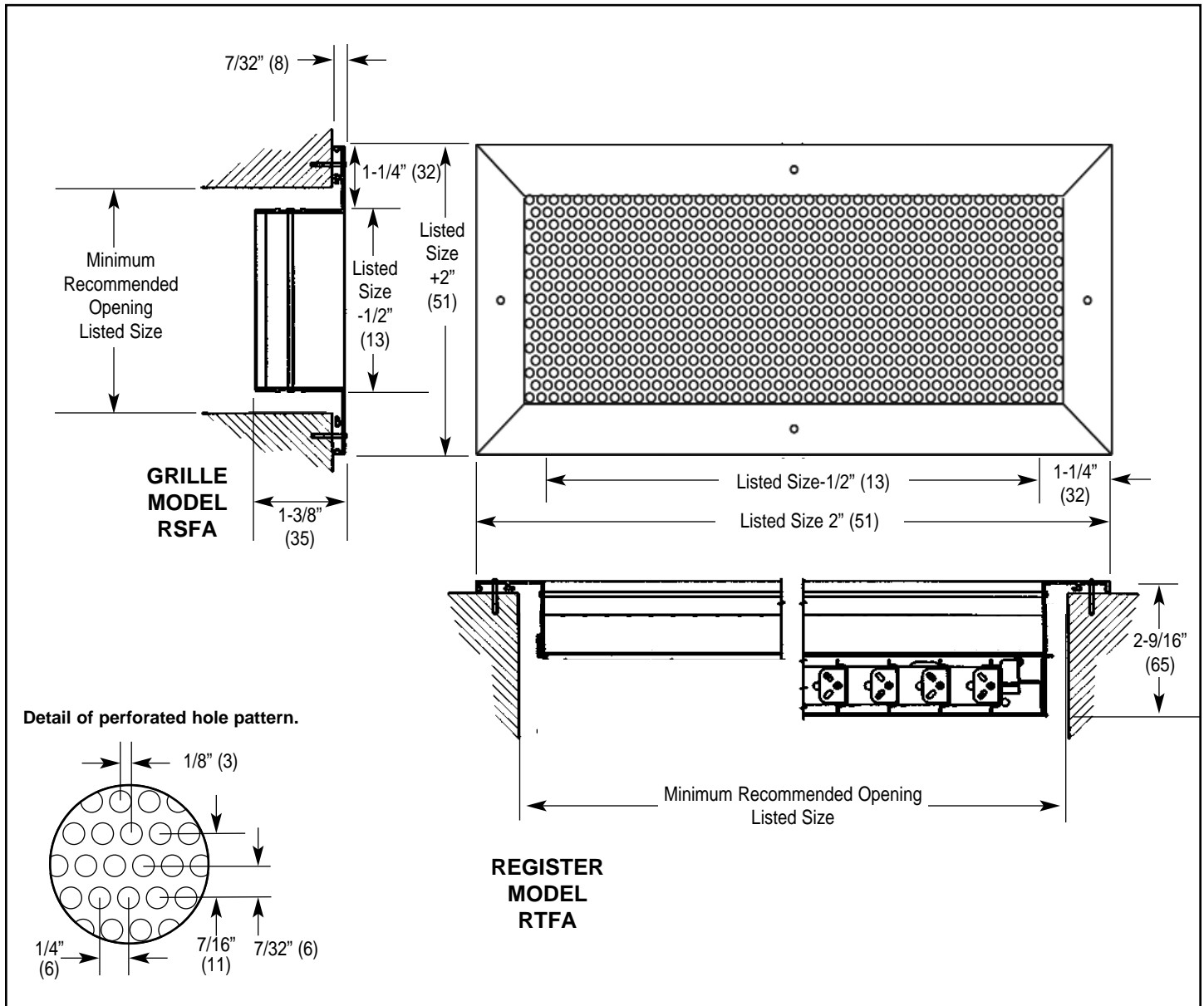


Imperial [IP] Dimensions
Metric (SI) in Parentheses

CARNES COMPANY 448 S. Main St., P. O. Box 930040, Verona, WI 53593-0040 Phone: (608)845-6411 Fax: (608)845-6504 www.carnes.com



NOTES:

- Standard screws are #6 x 1-1/4" (32) phillips countersunk screws.
- Standard color is Carnes Bright White. Other colors are available on request.
- Perforated material is approximately 51% free area.
- Standard sizing is in even inch increments in both dimensions. Odd inch and fractional sizing [in 1/8" (3) increments] is available on request.
- Steel damper is model RXEA opposed blade damper.
- The standard operator on the damper takes a medium size flat-blade screwdriver.
- Metric dimensions are given in millimeters.
- For lay-in applications, order module size -2-1/4" (i.e. for a 24 x 24 grid, order 21-3/4 x 21-3/4). Use option N for no screw holes.

DIMENSIONS LISTED IN INCHES (In Millimeters)

| Model | Damper | Front Direction | Available Sizes* | |
|-------|----------|-----------------|------------------|-----------------|
| | | | Minimum W x H | Maximum W x H |
| RSFA | None | Horizontal | 6x4 (152x102) | 36x36 (914x914) |
| RSFA | None | Vertical | 6x4 (152x102) | 36x36 (914x914) |
| RTFA | Aluminum | Horizontal | 6x4 (152x102) | 36x36 (914x914) |
| RTFA | Aluminum | Vertical | 6x4 (152x102) | 36x36 (914x914) |

* Minimum and maximum single units sizes.

Larger sizes will be furnished by butting single units together. All butted units will be constructed of even inch sized panels unless otherwise specified. Maximum damper will be 36" x 24". Larger units will have multiple dampers.