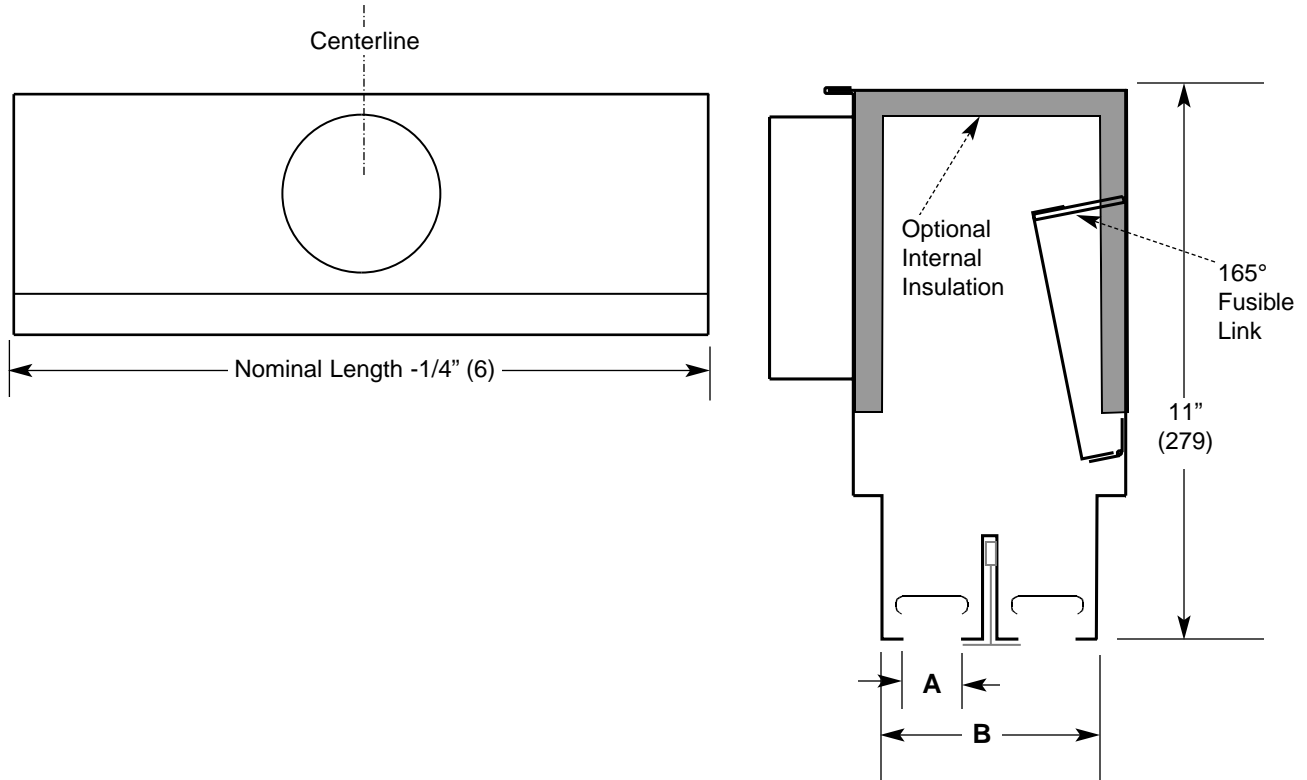


Imperial [IP] Dimensions
Metric (SI) in Parentheses

CARNES COMPANY, 448 S. Main St., P. O. Box 930040, Verona, WI 53593-0040 Phone (608) 845.6411 Fax: (608) 845.6470 carnes@carnes.com



Notes:

- Standard lengths are nominal size 24" (610), 30" (762), 48" (1219) and 60" (1524).
- Construction is 24 gauge galvaneal steel.
- Standard color is #06 Flat Black.
- Insulation is 1/2" (13), 2-pound density matte-finish fiberglass, internally mounted.
- Metric (SI) dimensions are shown in millimeters.
- Diffuser is UL classified for use in 3-hour fire rated exposed grid suspended ceilings, and meets UL time vs. temperature test criteria and NFPA 90A requirements.
- Cross-notch [4N length] is not available.
- Only the inlets shown below are available.

Available Inlets [Nominal Size]
5" (127) Round
6" (152) Round
8" (203) Ovalized To 6" (152) Height
10" (254) Ovalized To 6" (152) Height
12" (305) Ovalized To 6" (152) Height

Slot Width [Dim. A]	Face Width [Dim. B]
3/4" (19)	3-1/4" (83)
1" (25)	3-3/4" (95)
1-1/4" (32)	4-3/4" (121)
1-1/2" (38)	5-3/4" (146)

