

COMBINATION DIMENSIONS

IP and (SI Metric)

CARNES COMPANY 448 S. Main St., P. O. Box 930040, Verona, WI 53593-0040 Phone: (608)845-6411 Fax: (608)845-6504 www.carnes.com

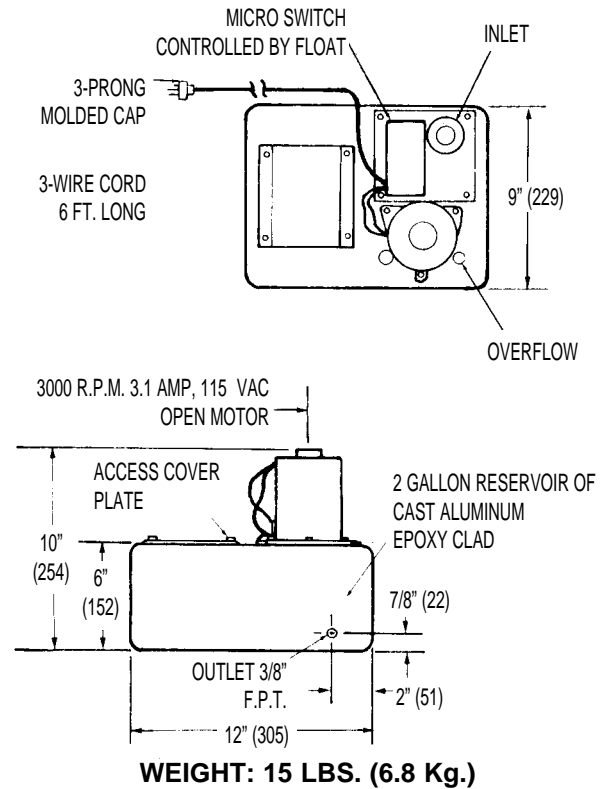
SPECIFICATIONS



A drain water pump is available for mounting directly below the humidifier cabinet. This pump is ideal for an application where the building drain is remotely located or is at a higher elevation than the humidifier drain connection. This unit operates on a float principle which automatically starts the pump when the reservoir is 3/4 full of water.

HEAD AND FLOW DATA

Gallons per hour at:					
2'	6'	10'	14'	16'	20'
720	660	552	432	372	252



INSTALLATION

Connect discharge tube or pipe to the 3/8" NPT discharge hole. Raise the discharge line to the highest point possible above the pump [20 feet (6m) max.]; form an inverted "U" trap and then slope downward into drain. This helps to prevent backward siphoning which causes excessive pump cycling. If drainback is a problem, the installation of a checkvalve is recommended.

Maintenance - In normal applications, this pump requires no scheduled maintenance for efficient operation. However, to extend motor bearing life it is recommended that they be oiled every 6 months with S.A.E. 20.

