

### "T" FITTINGS

"T" fittings can be installed in steam hose and condensate return lines when it is desirable to have one steam cylinder feed two distribution pipes.

**Model HXTABA:** Used with "AX" or "B" type steam cylinders. Copper construction.

**Model HXTACA:** Used with "C" type steam cylinders. Copper construction.

**Model HXTAD:** Used with condensate return line HXRA. Plastic construction.

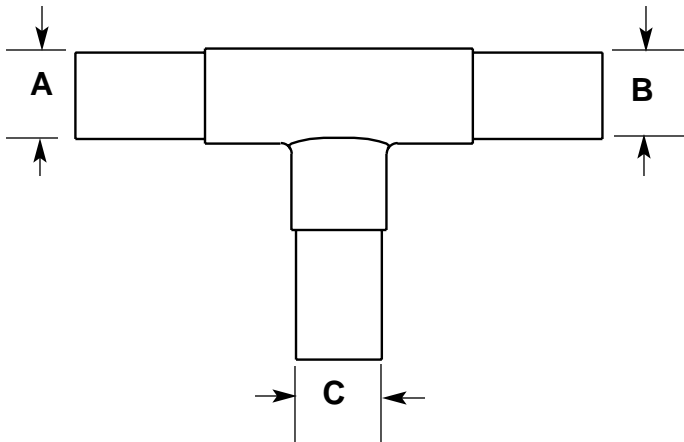
### DRAIN "T" FITTINGS

Steam hose drain fittings are used to drain condensate when the duct is located below the top of the humidifier or where the length of the steam hose is in excess of 12 feet.

**Model HXTABB:** Used with steam hose HXSAB. Copper construction. Connects to HXRA condensate return line.

**Model HXTACB:** Used with steam hose HXSAC. Copper construction. Connects to HXRA condensate return line.

### DIMENSIONS



Dimensions Listed In Inches

Model	A	B	C
HXTABA	7/8	7/8	7/8
HXTACA	1-5/8	1-5/8	1-5/8
HXTAD	3/8	3/8	3/8
HXTABB	7/8	7/8	3/8
HXTACB	1-5/8	1-5/8	3/8