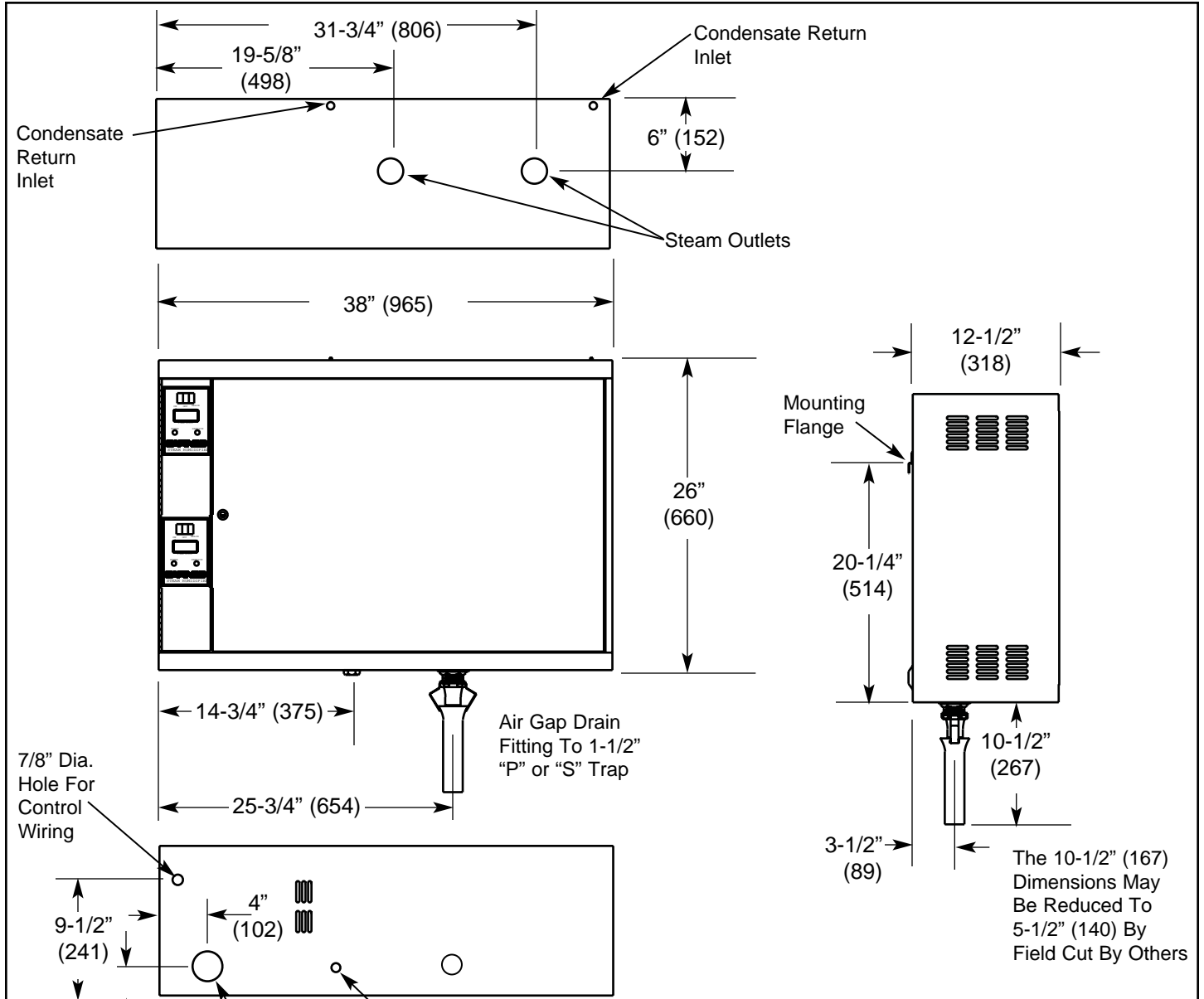


Imperial [IP] Dimensions  
Metric (SI) in Parentheses

CARNES COMPANY 448 S. Main St., P. O. Box 930040, Verona, WI 53593-0040 Phone: (608)845-6411 Fax: (608)845-6470 www.carnes.com



**SYSTEM INCLUDES:** Cylinders installed in Cabinet; 18 gauge Steel Cabinet; Prewired and Prepped; Built-in Water Strainer; Electronic Overload Protection; Digital Steam Output Meter Calibrated In Pounds of Steam per Hour; Door Interlock to Disconnect Power to Cylinders; Hinged Door with Lock; Air Gap Drain Fitting.

**OPTION:** Internal Secondary Circuit Breakers. (Model HB)

**FINISH:** No. 01 White

Model	Max. Lb/Hr.	kW	Ph.	Volt	Line Amp	Disc. Size	Opt. Circuit Breaker	Steam Cylinder
HCHG	125	43.0	3	208	119.5	175	4-40	2-C62
				230	108.0	150	4-40	2-C62
				460	54.0	75	2-40	2-C12
				575	43.2	60	2-30	2-C12
	150	51.7	3	208	143.4	200	4-50	2-C62
				230	129.7	200	4-50	2-C62
				460	64.8	90	2-50	2-C12
				575	51.9	75	2-35	2-C12
	175	60.3	3	208	167.3	250	4-60	2-C62
				230	151.3	225	4-60	2-C62
				460	75.6	110	2-60	2-C12
				575	60.5	90	2-50	2-C12
200	68.9	3	208	191.2	300	4-60	2-C62	
			230	172.9	250	4-60	2-C62	
			460	86.4	125	2-60	2-C12	
			575	69.2	100	2-50	2-C12	