

CARNES STEAM HUMIDIFIERS are available with a complete selection of accessories to provide accurate humidity control.

WALL HUMIDISTAT, PROPORTIONAL CONTROL

Model HXHAM



The Model HXHAM is a wall-mounted, microprocessor-controlled humidistat solution for cutting edge humidity control. The HXHAM employs a backlit LCD module, which displays both the ambient temperature and humidity of the surrounding air. The embedded software allows user navigation between temperature/humidity viewing mode and set-point adjustment mode and also outdoor temperature and humidity viewing mode. Set-point range is 0 to 100%. An optional outdoor temperature compensation sensor can be added (HXHAMT).

WALL HUMIDISTAT, ON-OFF CONTROL

Model HXHAA



Mount this humidistat four or five feet above the floor in freely circulating air of the temperature and humidity about average for the entire space to be controlled. Avoid locations near hot or cold air ducts and discharge air from the humidifier. Scale range is from 10-90% RH. Differential is 5% non-adjustable. Case dimensions are 4-3/8" high, 2-7/8" wide and 1-5/8" deep including control knob.

WALL HUMIDISTAT, PROPORTIONAL CONTROL

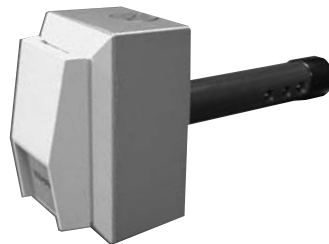
Model HXHCG



The wall mounted HXHCG humidistat uses a special sensor and electronic circuitry to modulate the output of the humidifier. The humidistat automatically adjusts the humidifier output to match the humidity requirements. This humidistat has a concealed set-point adjustment with a locking cover. Set-point range is from 10-90% RH. Case dimensions are 4-1/2" high, 2-13/16" wide and 1-1/4" deep.

DUCT HUMIDISTAT PROPORTIONAL CONTROL

Model HXHAN



The Model HXHAN is an intelligent humidistat solution used exclusively for duct mounted installations. The humidistat is capable of providing both humidity and temperature measurements from inside the duct. The microprocessor control takes the temperature into consideration when calculating the humidity to provide an extra degree of precision. 0 to 100% set-point range.

DUCT HUMIDISTAT, ON-OFF CONTROL

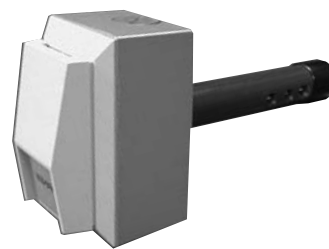
Model HXHAB



This duct mounted humidistat is installed in the return air duct to sense the humidity level in the area being served. Scale range is 15-50% RH. Differential is 4-6% non-adjustable. Case dimensions are 3-3/4" high and 2-3/8" wide. The humidistat projects 2-1/2" outside of the duct and extends 7-1/2" into the duct.

DUCT HUMIDISTAT, PROPORTIONAL CONTROL

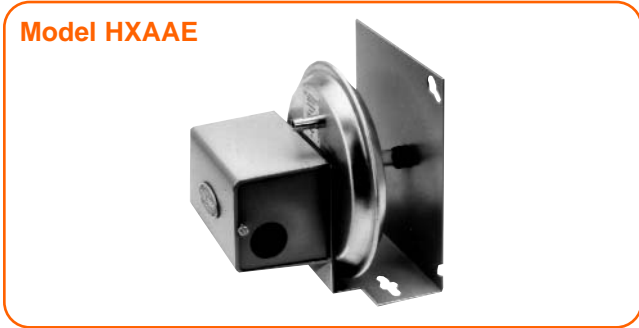
Model HXHCH



The model HXHCH can be mounted in either the return air duct when used to sense the humidity in the area being served or in the supply duct a minimum of 10 feet downstream of the steam distributor pipe when used as a high limit control. Set-point range is 10-90% RH. Case dimensions are 4-1/2" high and 2-13/16" wide. The humidistat projects 3-1/2" outside of the duct and extends 5-3/4" into the duct.

AIR FLOW SWITCH, PRESSURE DIFFERENTIAL TYPE

Model HXAAE



Air flow in the duct may be sensed by using this pressure differential switch. The differential in pressure between the interior and exterior of the duct closes a switch when air is moving. Air pressure differential as low as .07 w.g. may be sensed with this switch. Mounting plate dimensions are 4-3/4" wide, 5-1/8" high. The switch projects 4-3/8" outside the duct.

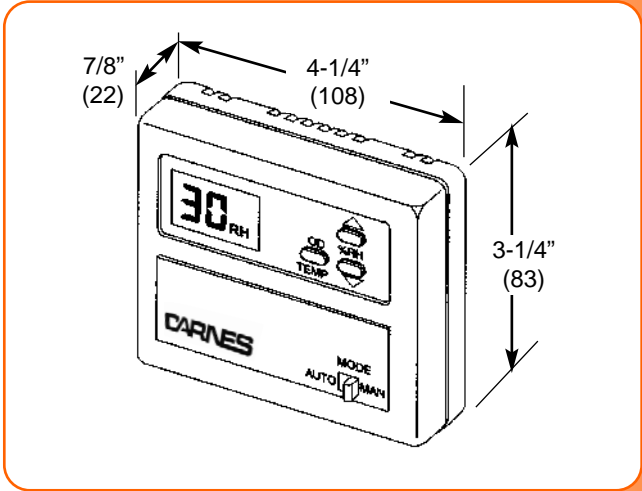
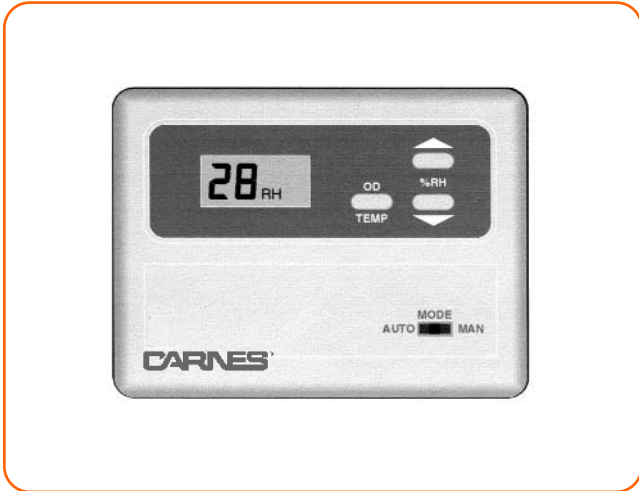
HIGH LIMIT HUMIDISTAT

Model HXHAD



The model HXHAD is available to reduce the potential of condensation occurring in the supply duct. The control must be mounted a minimum of 10 feet downstream of the steam distributor pipe. Set-point range is 15-95% RH. Differential is 5% non-adjustable. Mounting plate dimensions are 6-1/2" wide, 4-3/4" high. The humidistat projects 2-1/4" outside the duct and extends 1-1/4" into the duct.

OUTDOOR AIR TEMPERATURE COMPENSATED DIGITAL HUMIDISTAT, ON-OFF CONTROL



Model HXHAT

The HXHAT humidistat can be either wall or duct mounted and includes a remote outdoor temperature sensor for exterior wall or intake duct mounting. The humidistat can automatically change the set-point in response to changes in outdoor temperature or be set to maintain a set-point regardless of temperature changes. The LCD display shows set-point RH%, actual RH% or outdoor temperature (from -9 to 98°F). Relay contacts provide an on/off signal to the humidifier. Set-point range is from 30-65% RH. Default set-point is 40% RH.

The HXHAT will automatically reduce the RH set-point as the temperature drops below 35°F. The graph below shows the RH setting of 35% RH and as the temperature drops the RH set-point is adjusted by the computer as shown. Below -10° there is no adjustment.

