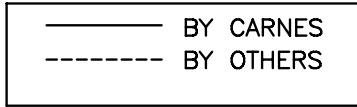


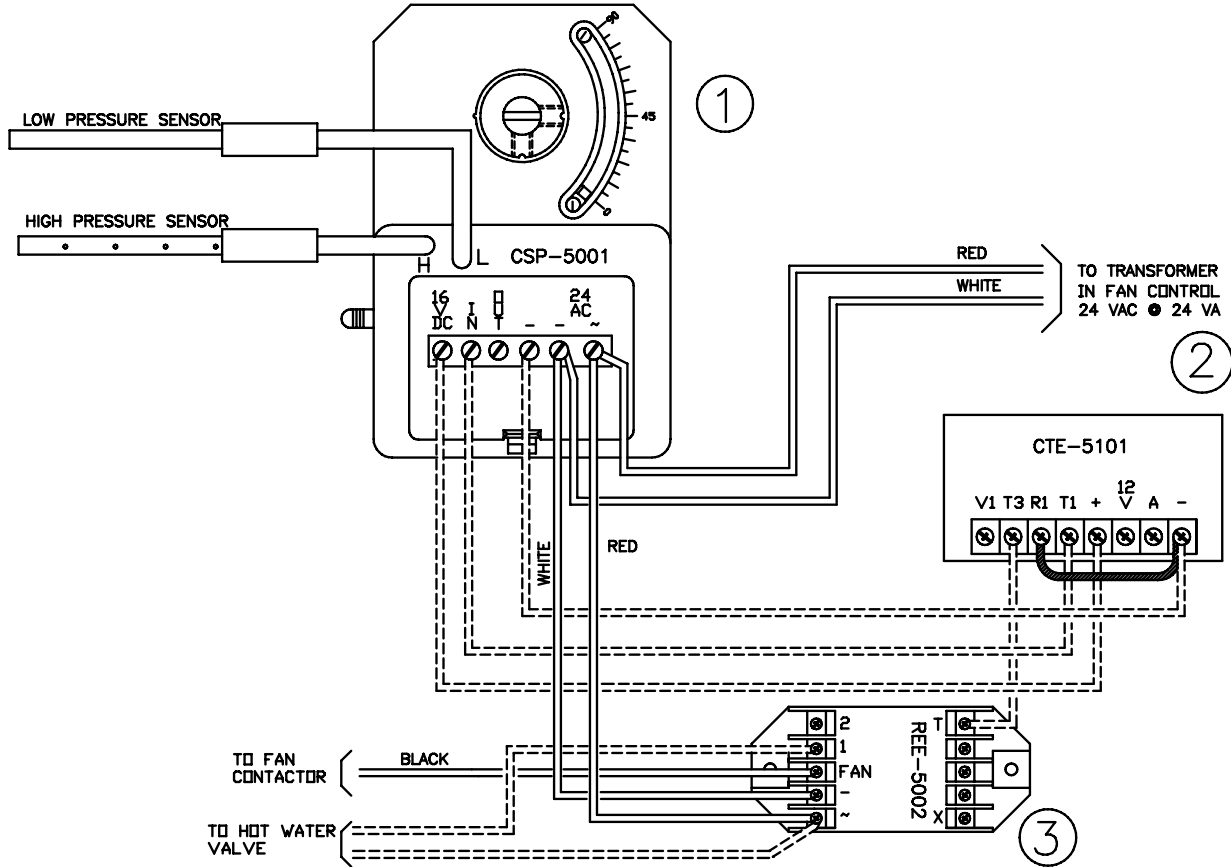
## SPECIFICATION SHEET

### CONSTANT FAN POWERED AIR TERMINAL - WITH HOT WATER REHEAT ANALOG ELECTRONIC CONTROLS ET - CONTROL OPTION

CARNES COMPANY, 448 S. Main St., P. O. Box 930040, Verona, WI. 53593-0040 Phone: 608/845-6411 Fax: 608/845-6470 E-Mail: carnes@carnes.com http://www.carnes.com



ITEM	PART NO.	DESCRIPTION
1	999-2661	CSP-5001 CONTROLLER/ACTUATOR
2	AXWCA	CTE-5101 THERMOSTAT
3	999-2672	REE-5002 FAN RELAY MODULE



### SEQUENCE OF OPERATION

THE TERMINAL UNIT FAN RUNS CONTINUOUS TO PROVIDE CONSTANT AIRFLOW TO THE ROOM.

ON A CALL FOR COOLING THE PRIMARY DAMPER OPENS TOWARDS THE MAXIMUM CFM SETTING TO SATISFY ROOM SET-POINT. AT MAXIMUM PRIMARY CFM THE FAN WILL DELIVER 100% PRIMARY AIR TO THE SPACE.

ON A CALL FOR HEATING THE PRIMARY DAMPER CLOSES TOWARDS THE MINIMUM CFM SETTING. AS THIS OCCURS, PLENUM AIR IS INDUCED TO MAINTAIN CONSTANT AIRFLOW AND SATISFY ROOM SET-POINT.

ON A FURTHER CALL FOR HEAT PRIMARY AIRFLOW IS AT MINIMUM SETTING AND THE HOT WATER COIL VALVE IS ENERGIZED. AS THE ROOM TEMPERATURE INCREASES, THE WATER COIL IS DEENERGIZED AND PRIMARY AIRFLOW WILL INCREASE TO SATISFY ROOM SET-POINT.

### CONTROL DIAGRAM

