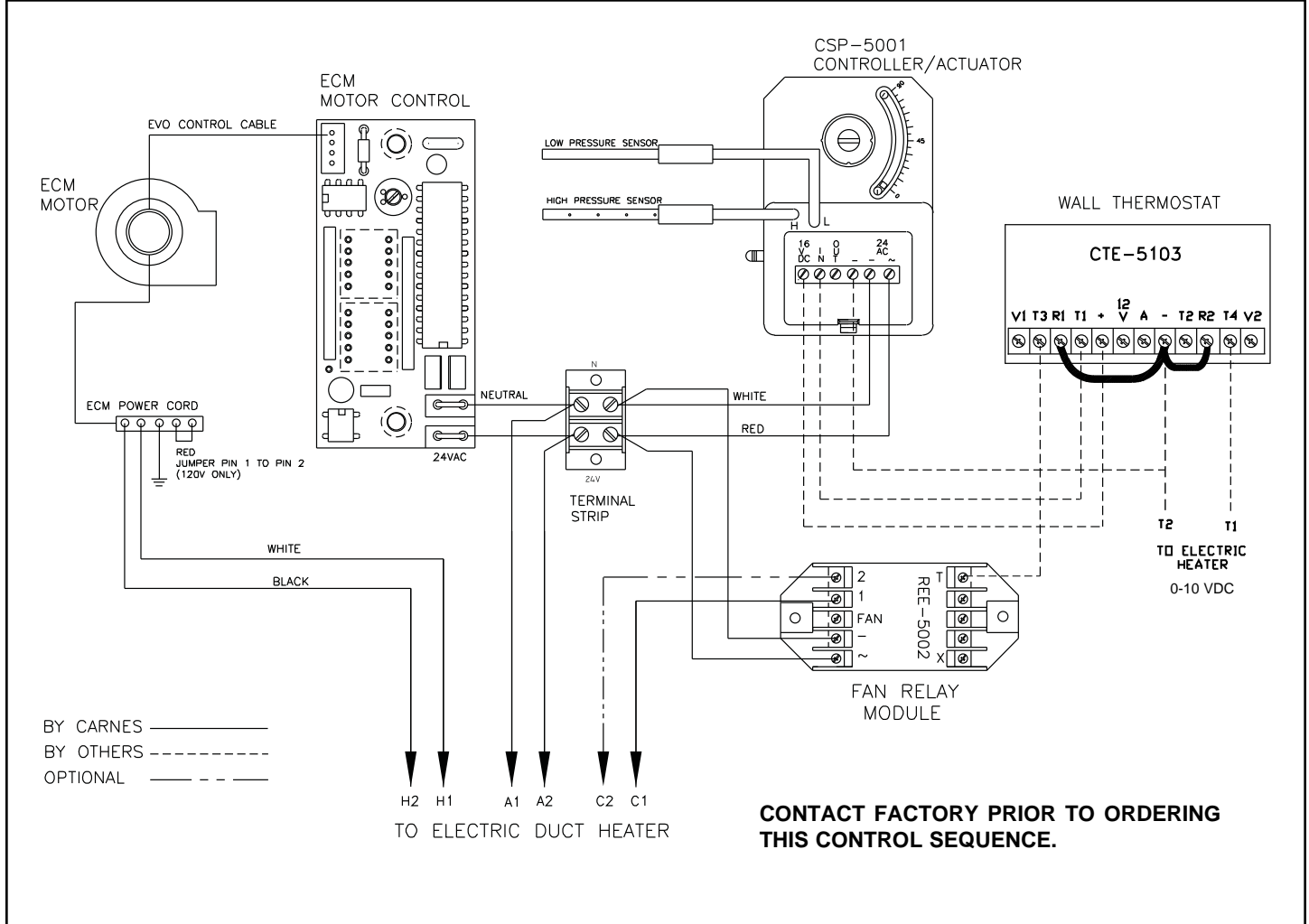


SPECIFICATION SHEET

CONSTANT FAN POWERED AIR TERMINAL - WITH ELECTRIC REHEAT ANALOG ELECTRONIC CONTROLS — ET - CONTROL OPTION, ECM SCR CONTROL OPTION

CONTACT FACTORY PRIOR TO ORDERING THIS CONTROL SEQUENCE

CARNES COMPANY 448 S. Main St., P. O. Box 930040, Verona, WI 53593-0040 Phone: (608)845-6411 Fax: (608)845-6504 www.carnes.com



SEQUENCE OF OPERATION

THE TERMINAL UNIT FAN RUNS CONTINUOUS TO PROVIDE CONSTANT AIRFLOW TO THE ROOM.

ON A CALL FOR COOLING THE PRIMARY DAMPER OPENS TOWARDS THE MAXIMUM CFM SETTING TO SATISFY ROOM SET-POINT. AT MAXIMUM PRIMARY CFM THE FAN WILL DELIVER 100% PRIMARY AIR TO THE SPACE.

ON A CALL FOR HEATING THE PRIMARY DAMPER CLOSES TOWARDS THE MINIMUM CFM SETTING. AS THIS OCCURS, PLENUM AIR IS INDUCED TO MAINTAIN CONSTANT AIRFLOW AND SATISFY ROOM SET-POINT.

ON A FURTHER CALL FOR HEAT, PRIMARY AIRFLOW IS AT THE MINIMUM SETTING AND THE ELECTRIC HEAT IS ENERGIZED.

CONTROL DIAGRAM

