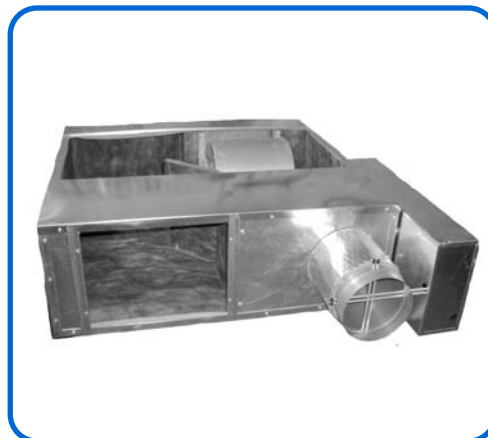


**Models** **ACFQ w/o Coil**  
**ACWQ w/Hot Water Coil**  
**ACEQ w/Electric Coil**

The Carnes quiet constant volume fan terminals are designed for noise sensitive applications such as offices, theaters, schools and libraries. The constant volume fan runs continuously in the occupied mode, providing constant background sound to the space.

The primary air damper operates in the same manner as a standard throttling unit, except that all of the primary air is sent through the in-line (series) fan.

Integral sound baffles and isolated motor mounting ensure low sound levels throughout the air flow range.



**Features Include:**

- Air flow capacities to 2450 CFM.
- Durable 20 gauge galvanized steel casing construction.
- Bottom access panel for internal components.
- Flange or slip and drive discharge connections.
- Forward curved centrifugal type fan assemblies with thermally protected, permanent split capacitor type 120 or 277 volt, single phase, fractional horsepower motors.
- Adjustable SCR fan speed control.
- Fan/motor assemblies are isolated from the casing using rubber isolators to minimize vibration transmission.
- Low leakage primary air damper design.
- Secondary air filter rack.
- Performance data based on tests conducted in accordance with ARI Standard 880-98.
- Air flow switch.
- All units are equipped with pressure independent pneumatic or electronic controls.
- Field adjustable P/E switch with pneumatic controls.
- Averaging type velocity sensor and calibration chart for measuring air flow through the primary air damper.
- Insulation is 1" thick, 1-1/2 lb. dual density fiberglass with surface treated to prevent air erosion, UL listed and meets NFPA 90A requirements.
- Damper controls and fan controls are located in one enclosure.
- ARI listed.
- Optional ETL listing.
- Optional one or two row hot water coils (Model ACW). Coil is factory attached to the unit discharge.
- Optional one, two or three stage electric reheat coils (Model ACE). Coil is factory attached to unit discharge or shipped separately for field mounting.
- Optional secondary air filters, Class I (re-usable) or Class II (throw away).
- Optional non-fused or fused fan disconnect switch.
- Optional foil coated insulation (Hospital, Laboratory, etc. applications).

**Available Modules:**

- Basic control unit — **Model ACFQ.**
- Basic control unit with hot water coil — **Model ACWQ.**
- Basic control unit with electric coil — **Model ACEQ.**

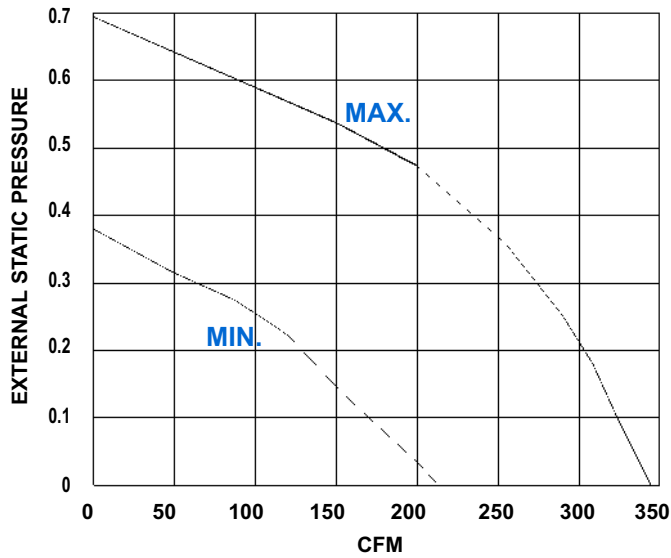


Foil Faced Insulation Available

## FAN CURVES CFM vs EXTERNAL STATIC PRESSURE

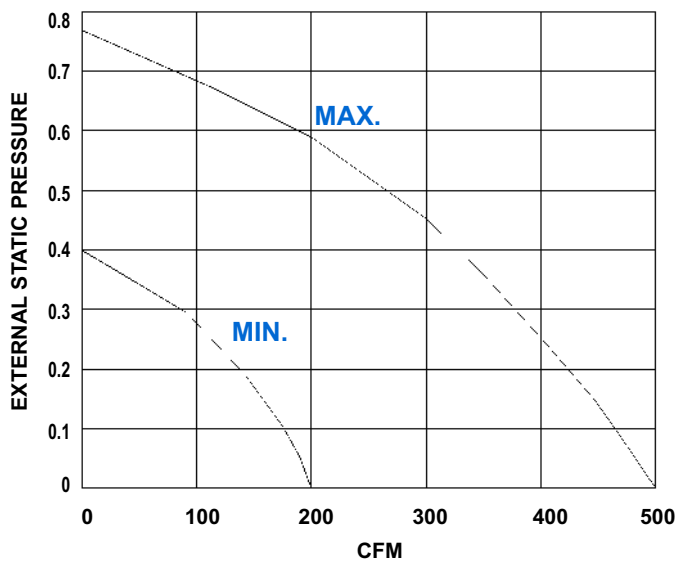
### FAN SIZE A

AC\_Q 05  
1/6 H. P. Motor



### FAN SIZE B

AC\_Q 06  
1/6 H. P. Motor

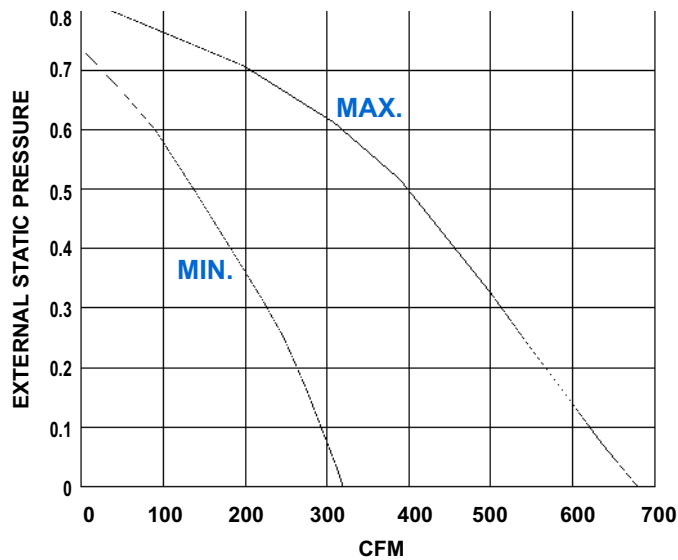


- NOTES:**
1. External static pressure (ESP) consists of down stream ductwork, coils, flex duct, etc.
  2. Pressure drops due to heating coils are treated as external static pressure .
  3. For proper operation, the downstream ESP must be at least 0.20" W. G.

## FAN CURVES CFM vs EXTERNAL STATIC PRESSURE

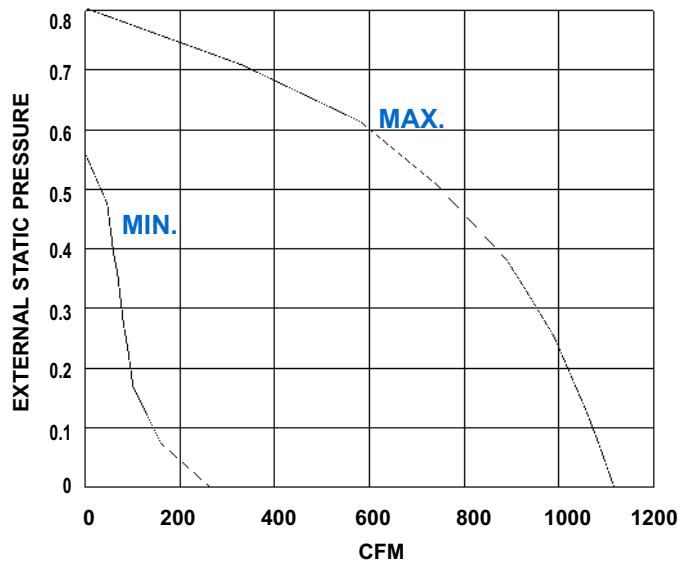
### FAN SIZE C

AC\_Q 07  
1/6 H. P. Motor



### FAN SIZE D

AC\_Q 08  
1/4 H. P. Motor



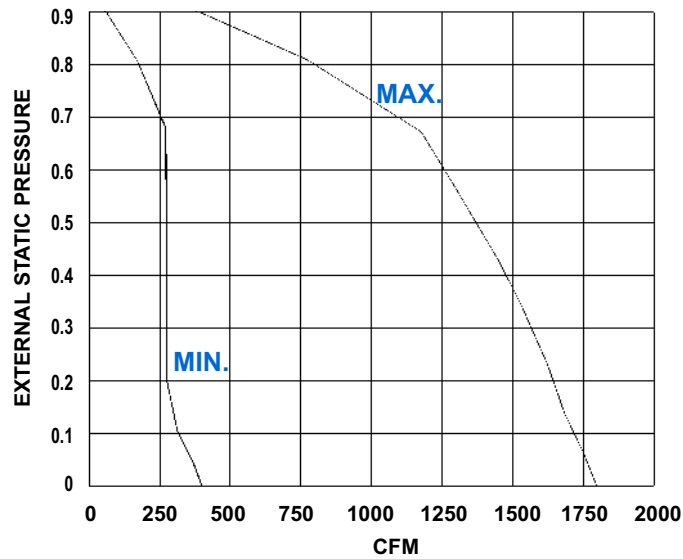
- NOTES:**
1. External static pressure (ESP) consists of down stream ductwork, coils, flex duct, etc.
  2. Pressure drops due to heating coils are treated as external static pressure .
  3. For proper operation, the downstream ESP must be at least 0.20" W. G.

Fan Powered Units

## FAN CURVES CFM vs EXTERNAL STATIC PRESSURE

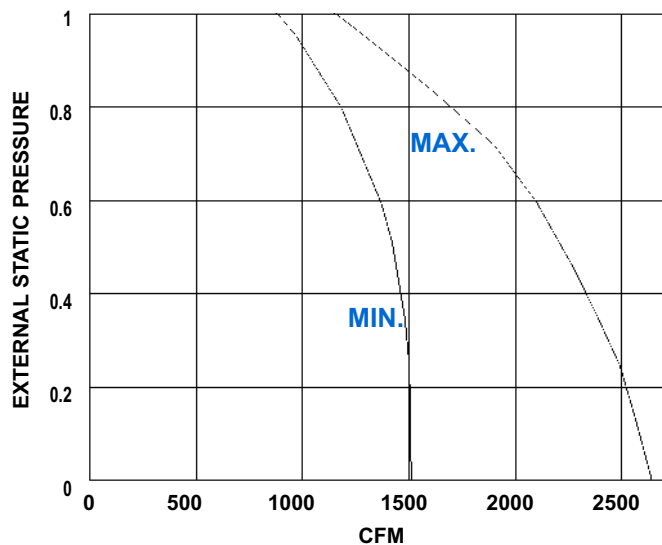
### FAN SIZE E

AC\_Q 10  
1/2 H. P. Motor



### FAN SIZE F

AC\_Q 12  
3/4 H. P. Motor



- NOTES:**
1. External static pressure (ESP) consists of down stream ductwork, coils, flex duct, etc.
  2. Pressure drops due to heating coils are treated as external static pressure .
  3. For proper operation, the downstream ESP must be at least 0.20" W. G.

**Model AC \_ Q 05A**

(FAN ON — 100% Primary Air/Mixing/100% Secondary Air)

Primary/ Secondary CFM	Primary Air $\Delta$ Ps	Discharge Sound							Radiated Sound								
		Sound Power db							Max. NC	Sound Power db							Max. NC
		Octave Band								Octave Band							
2	3	4	5	6	7	NC	2	3	4	5	6	7	NC				
290/0	-0.040	63	57	51	56	53	48	11	59	54	47	41	34	29	17		
	0.5	64	57	52	55	52	48	11	61	54	47	41	34	31	18		
	1	65	57	52	55	52	49	11	63	55	47	42	37	36	20		
	3	65	58	52	55	52	49	12	63	57	49	45	46	46	21		
145/145	0.5	60	54	50	53	50	46	--	55	50	46	39	32	29	14		
	1	62	55	51	54	51	48	10	58	53	46	41	35	34	16		
	3	62	56	52	54	51	48	10	58	54	47	44	45	44	17		
0/290	—	62	56	51	55	52	48	10	56	51	47	40	35	31	15		
200/0	-0.153	57	51	47	49	45	40	--	54	49	43	37	28	25	11		
	0.5	58	51	47	49	45	40	--	56	49	43	37	29	26	11		
	1	58	51	47	48	36	40	--	57	50	43	38	34	32	13		
	3	59	53	49	48	45	42	--	58	52	45	42	45	44	17		
100/100	0.5	54	50	47	47	43	38	--	52	48	42	36	26	25	10		
	1	56	51	46	47	44	40	--	53	49	42	36	32	31	11		
	3	56	51	46	47	44	40	--	53	49	43	41	45	44	17		
0/200	—	57	51	48	48	44	40	--	51	47	42	36	25	25	10		
100/0	0	52	47	40	42	37	30	--	52	48	42	35	24	23	10		
	0.5	52	47	40	42	37	30	--	52	48	42	36	26	25	10		
	1	52	47	40	42	37	30	--	52	48	42	36	32	29	10		
	3	52	47	40	42	37	35	--	53	48	43	41	44	44	17		
50/50	0.5	51	45	38	39	34	27	--	52	48	42	35	25	23	10		
	1	51	46	39	41	36	30	--	52	48	43	36	32	31	11		
	3	52	46	41	42	37	34	--	52	48	43	40	44	44	17		
0/100	—	52	47	41	42	37	31	--	52	48	42	35	24	23	10		

- NOTES:**
1.  $\Delta$ Ps static pressure difference from inlet to discharge.
  2. The lowest value of  $\Delta$ Ps is the minimum pressure required to deliver CFM shown with primary damper in wide open position.
  3.  $\Delta$ Ps does not include hot water or electric coils.
  4. (--) indicates NC levels less than 10.

NC Levels are derived from tests conducted in accordance with ARI Standard 880-98 and are calculated in accordance with ARI Standard 885-98 as application data based on the following:

**Discharge NC levels are based on —**

- a) 5 foot rectangular 12" x 12" duct lined with 1" fiberglass insulation.
- b) 6 foot lined flex duct (8" diameter).
- c) Maximum of 300 CFM per outlet.
- d) Space effect factor (5000ft<sup>3</sup>) at 10 feet from outlet.
- e) End reflection.
- f) Environmental adjustment factor.

**Radiated NC levels are based on —**

- a) Plenum/ceiling effect - 5/8" mineral fiber tile, 35 lb/ft<sup>3</sup> - 3 foot plenum
- b) Space effect factor (5000ft<sup>3</sup>) at 10 feet from source.
- c) Environmental adjustment factor.



A Participating Member  
in the ARI 880  
Certification Program

Fan Powered Units

**Model AC \_ Q 06B**

(FAN ON — 100% Primary Air/Mixing/100% Secondary Air)

Primary/ Secondary CFM	Primary Air $\Delta P_s$	Discharge Sound							Radiated Sound								
		Sound Power db							Max. NC	Sound Power db							Max. NC
		Octave Band								Octave Band							
2	3	4	5	6	7	NC	2	3	4	5	6	7	NC				
400/0	-0.069	70	61	57	61	59	56	15	63	56	52	46	39	37	21		
	0.5	70	62	58	62	59	57	16	64	57	52	47	39	37	22		
	1	70	63	58	62	59	57	16	65	58	53	47	41	39	23		
	3	71	64	59	62	60	58	17	65	60	54	49	46	45	24		
200/200	0.5	69	61	58	61	58	56	15	61	55	52	46	39	37	21		
	1	69	61	58	61	58	56	15	63	56	52	46	40	38	21		
	3	69	62	58	62	59	56	15	63	57	53	48	45	44	22		
0/200	—	69	62	59	63	59	57	16	63	57	53	47	39	37	22		
250/0	-0.185	61	54	49	53	49	44	--	56	50	46	39	31	27	14		
	0.5	61	54	49	53	49	46	--	56	50	46	39	32	28	14		
	1	62	55	50	53	49	46	--	56	50	46	40	35	33	14		
	3	62	55	50	53	49	46	--	57	52	49	44	45	43	18		
125/125	0.5	62	54	50	53	49	46	--	54	49	46	39	32	28	14		
	1	62	55	50	53	49	46	--	54	49	46	39	33	31	14		
	3	62	55	51	54	50	47	--	55	50	47	42	44	43	16		
0/250	—	61	54	50	53	49	46	--	53	49	46	39	31	27	14		
120/0	-0.224	53	47	41	43	37	31	--	52	47	42	33	24	21	10		
	0.5	52	47	41	43	37	31	--	52	47	44	36	28	24	12		
	1	52	47	41	43	37	33	--	52	47	44	36	32	30	12		
	3	53	48	43	44	39	36	--	52	47	44	41	44	43	16		
60/60	0.5	55	48	43	44	39	35	--	53	49	44	36	28	24	12		
	1	53	47	43	44	39	35	--	53	49	44	36	32	30	12		
	3	53	47	42	43	37	24	--	54	49	45	41	44	45	18		
0/120	—	53	48	42	44	39	35	--	54	49	44	36	28	24	12		

- NOTES:**
1.  $\Delta P_s$  static pressure difference from inlet to discharge.
  2. The lowest value of  $\Delta P_s$  is the minimum pressure required to deliver CFM shown with primary damper in wide open position.
  3.  $\Delta P_s$  does not include hot water or electric coils.
  4. (--) indicates NC levels less than 10.

NC Levels are derived from tests conducted in accordance with ARI Standard 880-98 and are calculated in accordance with ARI Standard 885-98 as application data based on the following:

**Discharge NC levels are based on —**

- a) 5 foot rectangular 12" x 12" duct lined with 1" fiberglass insulation.
- b) 6 foot lined flex duct (8" diameter).
- c) Maximum of 300 CFM per outlet.
- d) Space effect factor (5000ft<sup>3</sup>) at 10 feet from outlet.
- e) End reflection.
- f) Environmental adjustment factor.

**Radiated NC levels are based on —**

- a) Plenum/ceiling effect - 5/8" mineral fiber tile, 35 lb/ft<sup>3</sup> - 3 foot plenum
- b) Space effect factor (5000ft<sup>3</sup>) at 10 feet from source.
- c) Environmental adjustment factor.



A Participating Member in the ARI 880 Certification Program

**Model AC \_ Q 07C**

(FAN ON — 100% Primary Air/Mixing/100% Secondary Air)

Primary/ Secondary CFM	Primary Air $\Delta P_s$	Discharge Sound							Radiated Sound							Max. NC	
		Sound Power db							Max. NC	Sound Power db							
		Octave Band								Octave Band							
		2	3	4	5	6	7	NC	2	3	4	5	6	7	NC		
530/0	-0.132	75	67	62	67	65	62	21	70	63	56	51	44	41	30		
	0.5	75	67	62	67	64	62	21	70	63	56	51	44	41	30		
	1	75	67	62	68	65	63	22	70	63	56	51	45	43	30		
	3	76	68	62	68	65	63	22	71	64	57	52	48	46	31		
265/265	0.5	76	67	62	68	65	62	22	69	63	55	52	44	42	28		
	1	76	67	62	68	65	62	22	69	63	56	52	44	42	28		
	3	76	67	62	68	65	62	22	69	63	56	52	48	46	28		
0/530	—	75	67	62	68	64	62	21	69	64	56	52	44	41	29		
400/0	-0.188	67	61	57	60	57	54	13	63	57	51	46	38	35	21		
	0.5	70	62	59	62	59	56	15	64	58	51	46	39	36	22		
	1	70	62	59	63	59	57	16	66	60	52	47	40	38	24		
	3	71	64	59	63	60	58	17	67	61	54	49	46	45	26		
200/200	0.5	69	63	58	62	59	56	15	63	57	51	46	39	38	21		
	1	71	63	58	62	59	57	16	64	57	51	47	40	38	22		
	3	71	64	58	62	59	57	16	64	58	52	48	46	44	22		
0/400	—	70	63	59	62	59	56	15	65	59	52	47	40	38	23		
250/0	-0.267	58	52	47	50	45	41	--	53	49	44	38	31	27	12		
	0.5	58	52	47	50	46	42	--	54	50	45	38	31	28	13		
	1	58	52	48	51	46	43	--	55	51	46	39	34	31	14		
	3	59	54	49	52	46	43	--	57	53	48	44	45	43	17		
125/125	0.5	57	51	46	49	45	40	--	54	50	45	37	31	28	13		
	1	57	52	47	50	45	40	--	54	50	45	38	33	31	13		
	3	58	52	47	51	46	42	--	54	51	46	42	44	43	16		
0/250	—	59	54	48	50	46	42	--	54	50	44	37	29	27	12		

- NOTES:**
1.  $\Delta P_s$  static pressure difference from inlet to discharge.
  2. The lowest value of  $\Delta P_s$  is the minimum pressure required to deliver CFM shown with primary damper in wide open position.
  3.  $\Delta P_s$  does not include hot water or electric coils.
  4. (--) indicates NC levels less than 10.

NC Levels are derived from tests conducted in accordance with ARI Standard 880-98 and are calculated in accordance with ARI Standard 885-98 as application data based on the following:

**Discharge NC levels are based on —**

- a) 5 foot rectangular 12" x 12" duct lined with 1" fiberglass insulation.
- b) 6 foot lined flex duct (8" diameter).
- c) Maximum of 300 CFM per outlet.
- d) Space effect factor (5000ft<sup>3</sup>) at 10 feet from outlet.
- e) End reflection.
- f) Environmental adjustment factor.

**Radiated NC levels are based on —**

- a) Plenum/ceiling effect - 5/8" mineral fiber tile, 35 lb/ft<sup>3</sup> - 3 foot plenum
- b) Space effect factor (5000ft<sup>3</sup>) at 10 feet from source.
- c) Environmental adjustment factor.



A Participating Member  
in the ARI 880  
Certification Program

Fan Powered Units

**Model AC \_ Q 08D**

(FAN ON — 100% Primary Air/Mixing/100% Secondary Air)

Primary/ Secondary CFM	Primary Air $\Delta P_s$	Discharge Sound							Radiated Sound							Max. NC	
		Sound Power db							Max. NC	Sound Power db							
		Octave Band								Octave Band							
		2	3	4	5	6	7	NC	2	3	4	5	6	7	NC		
1000/0	-0.140	73	70	69	71	67	65	22	68	65	59	54	46	45	31		
	0.5	76	71	67	70	66	64	22	71	67	59	53	46	45	33		
	1	76	71	67	70	65	64	22	71	67	59	53	46	45	33		
	3	77	72	67	70	66	64	23	72	68	61	55	49	48	34		
500/500	0.5	73	68	66	69	64	63	20	67	65	58	53	44	44	30		
	1	73	68	66	69	64	63	20	68	65	58	54	45	45	30		
	3	73	68	66	69	65	63	20	69	66	59	54	48	47	31		
0/1000	—	72	66	65	69	64	62	19	68	65	58	54	45	44	30		
750/0	-0.156	67	62	60	61	58	56	13	63	60	53	45	38	37	24		
	0.5	71	65	63	65	61	59	16	65	62	55	49	41	40	27		
	1	71	65	63	65	61	59	16	66	63	56	50	42	41	28		
	3	72	67	64	66	62	60	17	67	65	58	53	47	46	30		
375/375	0.5	69	63	62	63	59	57	14	64	61	54	48	39	39	25		
	1	69	63	62	64	60	58	15	65	61	55	48	41	40	25		
	3	70	64	63	64	60	58	15	65	62	56	52	46	45	27		
0/750	—	69	62	62	63	58	56	13	62	61	53	47	39	39	25		
500/0	-0.216	60	53	51	52	48	44	--	57	54	46	39	31	28	17		
	0.5	64	58	56	56	52	50	--	60	56	49	42	34	33	19		
	1	64	58	56	56	52	50	--	61	57	50	43	37	35	21		
	3	65	59	57	57	53	51	--	62	60	55	49	46	44	24		
250/250	0.5	62	56	55	55	51	48	--	57	55	48	41	33	31	18		
	1	63	56	55	55	51	48	--	57	55	48	42	35	33	18		
	3	63	57	55	55	52	49	--	59	56	51	47	45	43	20		
0/500	—	63	56	55	55	51	48	--	58	54	48	39	31	30	17		

- NOTES:**
1.  $\Delta P_s$  static pressure difference from inlet to discharge.
  2. The lowest value of  $\Delta P_s$  is the minimum pressure required to deliver CFM shown with primary damper in wide open position.
  3.  $\Delta P_s$  does not include hot water or electric coils.
  4. (--) indicates NC levels less than 10.

NC Levels are derived from tests conducted in accordance with ARI Standard 880-98 and are calculated in accordance with ARI Standard 885-98 as application data based on the following:

**Discharge NC levels are based on —**

- a) 5 foot rectangular 12" x 12" duct lined with 1" fiberglass insulation.
- b) 6 foot lined flex duct (8" diameter).
- c) Maximum of 300 CFM per outlet.
- d) Space effect factor (5000ft<sup>3</sup>) at 10 feet from outlet.
- e) End reflection.
- f) Environmental adjustment factor.

**Radiated NC levels are based on —**

- a) Plenum/ceiling effect - 5/8" mineral fiber tile, 35 lb/ft<sup>3</sup> - 3 foot plenum
- b) Space effect factor (5000ft<sup>3</sup>) at 10 feet from source.
- c) Environmental adjustment factor.



A Participating Member in the ARI 880 Certification Program

**Model AC \_ Q 10E**

(FAN ON — 100% Primary Air/Mixing/100% Secondary Air)

Primary/ Secondary CFM	Primary Air $\Delta$ Ps	Discharge Sound							Radiated Sound								
		Sound Power db							Max. NC	Sound Power db							Max. NC
		Octave Band								Octave Band							
		2	3	4	5	6	7		2	3	4	5	6	7			
1600/0	-0.012	77	75	72	75	71	69	25	71	66	59	53	48	47	31		
	0.5	77	74	69	71	67	66	24	72	66	59	53	48	47	32		
	1	77	73	68	70	67	66	23	73	67	60	54	48	47	33		
	3	78	73	68	69	67	65	23	75	68	62	55	51	49	36		
800/800	0.5	76	73	69	71	67	65	23	71	63	58	52	46	45	31		
	1	76	73	68	70	67	65	23	72	63	58	52	46	45	32		
	3	76	73	68	70	67	65	23	72	67	61	55	49	48	33		
0/1600	—	74	74	71	74	70	70	26	68	63	59	55	48	48	28		
1300/0	-0.075	71	70	67	67	64	63	19	68	60	55	49	44	42	27		
	0.5	73	71	67	68	65	64	21	71	64	57	51	45	44	31		
	1	74	71	67	68	65	63	21	71	65	58	51	46	45	31		
	3	75	72	67	68	65	63	22	72	66	60	53	50	48	32		
650/650	0.5	74	71	66	67	64	63	21	67	62	55	50	44	43	27		
	1	74	71	66	67	64	63	21	68	62	56	50	45	43	27		
	3	74	71	67	68	64	63	21	70	63	59	54	48	47	30		
0/1300	—	68	67	65	65	63	62	18	65	59	54	49	43	42	23		
1000/0	-0.134	64	64	60	60	57	56	12	64	55	51	45	39	38	22		
	0.5	72	69	65	66	62	61	18	67	61	55	49	43	42	26		
	1	72	69	65	66	63	62	18	69	62	55	49	44	43	28		
	3	74	70	65	66	63	61	19	70	65	59	52	48	47	30		
500/500	0.5	70	68	64	65	61	60	17	65	60	53	48	42	41	24		
	1	71	68	64	66	62	61	17	65	60	55	49	43	42	24		
	3	71	68	65	65	62	61	17	67	61	56	53	48	45	26		
0/1000	—	65	62	60	59	57	55	11	63	57	51	45	39	38	21		

- NOTES:**
1.  $\Delta$ Ps static pressure difference from inlet to discharge.
  2. The lowest value of  $\Delta$ Ps is the minimum pressure required to deliver CFM shown with primary damper in wide open position.
  3.  $\Delta$ Ps does not include hot water or electric coils.
  4. (--) indicates NC levels less than 10.

NC Levels are derived from tests conducted in accordance with ARI Standard 880-98 and are calculated in accordance with ARI Standard 885-98 as application data based on the following:

**Discharge NC levels are based on —**

- a) 5 foot rectangular 12" x 12" duct lined with 1" fiberglass insulation.
- b) 6 foot lined flex duct (8" diameter).
- c) Maximum of 300 CFM per outlet.
- d) Space effect factor (5000ft<sup>3</sup>) at 10 feet from outlet.
- e) End reflection.
- f) Environmental adjustment factor.

**Radiated NC levels are based on —**

- a) Plenum/ceiling effect - 5/8" mineral fiber tile, 35 lb/ft<sup>3</sup> - 3 foot plenum
- b) Space effect factor (5000ft<sup>3</sup>) at 10 feet from source.
- c) Environmental adjustment factor.



A Participating Member  
in the ARI 880  
Certification Program

**Model AC \_ Q 12F**

(FAN ON — 100% Primary Air/Mixing/100% Secondary Air)

Primary/ Secondary CFM	Primary Air $\Delta$ Ps	Discharge Sound							Radiated Sound							Max. NC	
		Sound Power db							Max. NC	Sound Power db							
		Octave Band								Octave Band							
		2	3	4	5	6	7		2	3	4	5	6	7			
2450/0	-0.116	77	76	74	77	74	73	27	77	73	65	61	56	54	40		
	0.5	77	76	74	76	74	73	27	79	74	65	60	55	53	41		
	1	79	77	74	76	74	73	27	79	74	65	59	55	52	41		
	3	79	77	74	76	74	73	27	79	75	67	61	57	55	42		
1225/1225	0.5	78	77	74	78	73	73	27	78	74	64	61	55	53	41		
	1	79	77	74	78	74	73	27	78	74	65	61	55	53	41		
	3	79	77	74	76	74	73	27	79	75	66	61	56	54	42		
0/2450	—	76	75	73	77	73	72	26	77	73	64	61	56	53	40		
1950/0	-0.128	68	68	68	67	64	63	17	69	64	58	52	46	44	29		
	0.5	74	72	70	71	68	68	22	75	70	62	57	51	49	36		
	1	75	74	70	72	69	69	23	76	71	62	57	52	50	37		
	3	75	74	70	72	70	69	23	77	72	65	58	54	52	39		
975/975	0.5	72	72	69	71	67	67	21	71	67	59	54	48	46	33		
	1	74	72	70	72	68	68	22	71	67	60	54	49	47	33		
	3	76	73	70	72	69	68	22	71	67	61	57	51	49	33		
0/1950	—	70	68	68	69	65	65	19	70	66	59	53	48	46	31		
1050/0	-0.239	65	62	60	58	54	52	--	61	61	58	45	39	37	27		
	0.5	67	68	64	64	61	60	15	69	64	58	49	44	42	29		
	1	69	69	65	65	62	61	16	70	66	58	50	45	43	31		
	3	70	68	66	66	63	62	16	70	67	62	56	49	48	33		
525/525	0.5	65	65	63	62	58	57	11	66	63	58	48	42	40	28		
	1	65	66	64	63	60	58	12	67	63	58	49	43	41	28		
	3	65	66	64	63	60	58	12	67	63	59	52	47	46	28		
0/1050	—	62	62	63	61	57	55	--	65	61	57	47	41	37	26		

- NOTES:**
1.  $\Delta$ Ps static pressure difference from inlet to discharge.
  2. The lowest value of  $\Delta$ Ps is the minimum pressure required to deliver CFM shown with primary damper in wide open position.
  3.  $\Delta$ Ps does not include hot water or electric coils.
  4. (--) indicates NC levels less than 10.

NC Levels are derived from tests conducted in accordance with ARI Standard 880-98 and are calculated in accordance with ARI Standard 885-98 as application data based on the following:

**Discharge NC levels are based on —**

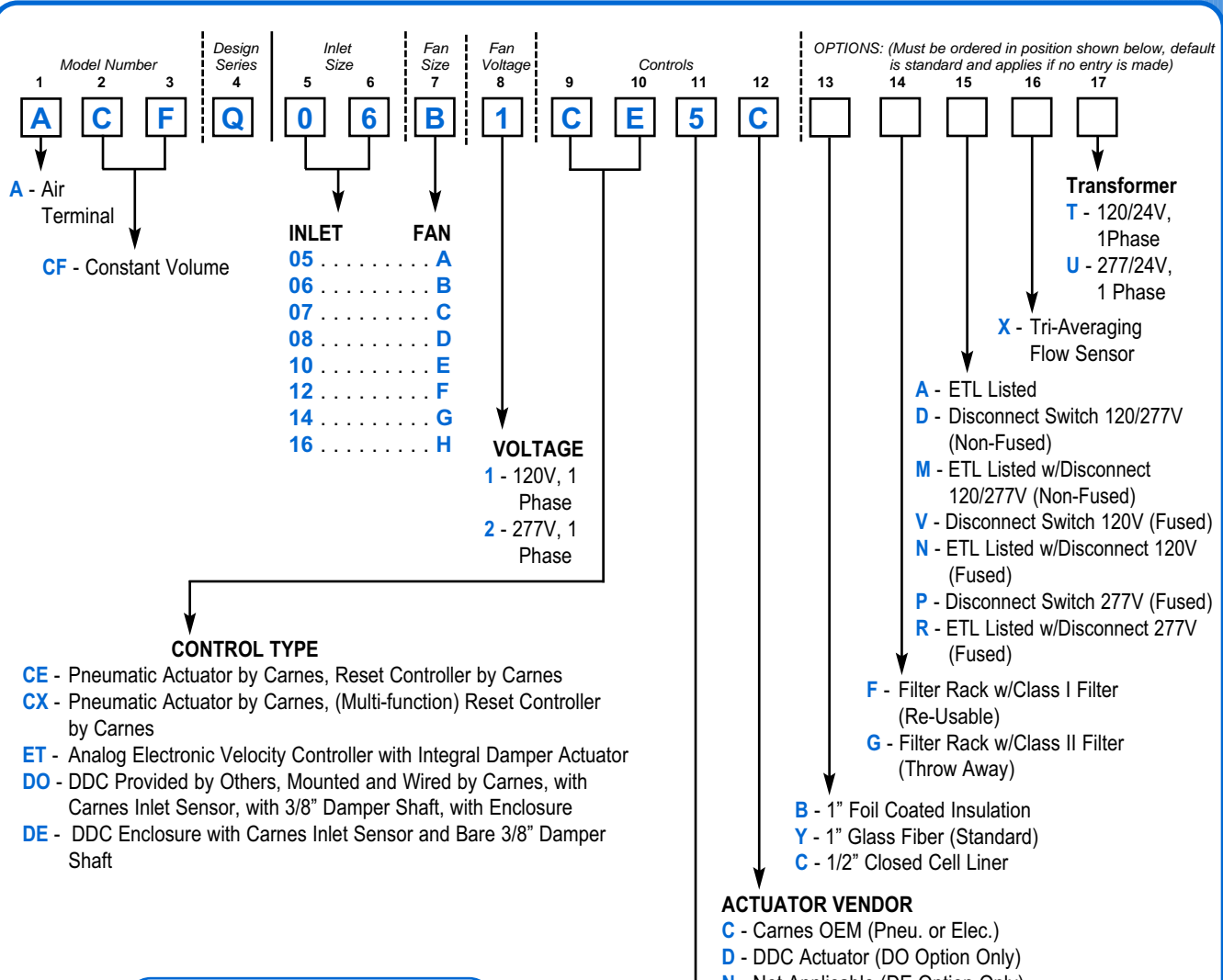
- a) 5 foot rectangular 12" x 12" duct lined with 1" fiberglass insulation.
- b) 6 foot lined flex duct (8" diameter).
- c) Maximum of 300 CFM per outlet.
- d) Space effect factor (5000ft<sup>3</sup>) at 10 feet from outlet.
- e) End reflection.
- f) Environmental adjustment factor.

**Radiated NC levels are based on —**

- a) Plenum/ceiling effect - 5/8" mineral fiber tile, 35 lb/ft<sup>2</sup> - 3 foot plenum
- b) Space effect factor (5000ft<sup>3</sup>) at 10 feet from source.
- c) Environmental adjustment factor.

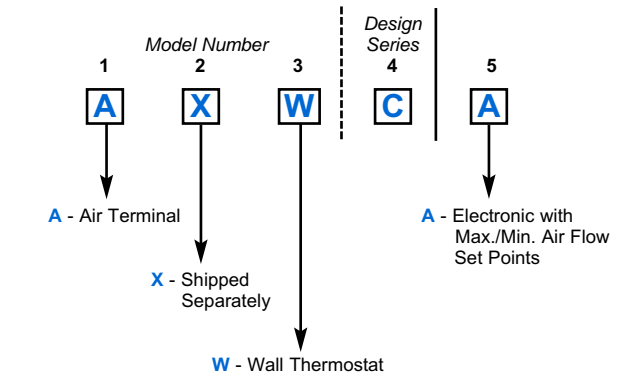


A Participating Member  
in the ARI 880  
Certification Program



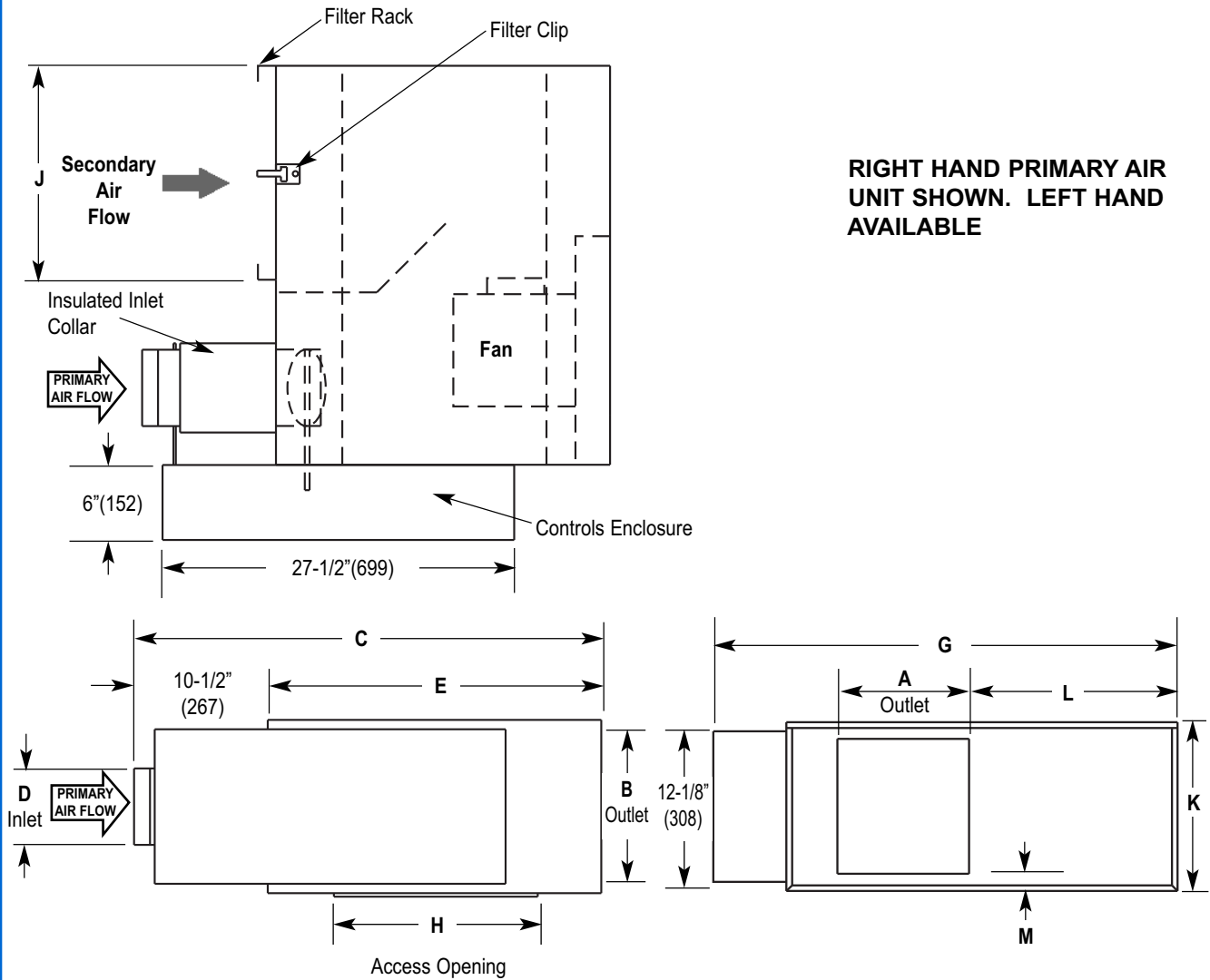
**NOTE:** Hand of controls is determined by facing the averaging flow sensor (inlet of the unit) with the supply air hitting the back of your head.

▼ **Electronic Thermostat**



A Carnes Electronic Thermostat **must be ordered** with the ET Electronic Control Option.

\* Electronic and DDC Units **DO NOT** fail open. '1' or '2' is used for Right or Left Hand Only. Electric/Electronic Units are shipped with the Damper in the Open Position.



**Dimensions Listed in Inches (Millimeters)**

Fan Size	Inlet Size	Primary CFM (L/s)	Secondary CFM (L/s) @ .25" E.S.P.	Fan H.P.	Outlet		C	Inlet		E	G	H	J	K	L	M*
					A	B		D								
A	05	290(137)	290(137)	1/6				4-7/8(124)								
B	06	400(189)	400(189)	1/6	12-3/4 (324)	12 (305)	48-1/4 (1226)	5-7/8(149)	37-3/4 (959)	46 (1168)	20 (508)	17-1/4 (438)	14 (356)	20-3/4 (527)	1 (25)	
C	07	540(255)	540(255)	1/6				6-7/8(175)								
D	08	1000(472)	1000(472)	1/4				7-7/8(200)								
E	10	1500(708)	1600(755)	1/2	16 (406)	15 (381)	54-1/2 (1384)	9-7/8(251)	44 (1117)	54 (1372)	24 (610)	21(533)	17-1/2(445)	27-1/2(699)	1-1/4(32)	
F	12	2300(1085)	2450(1156)	3/4				11-7/8 (302)				21(533)	20-1/8(511)	27-1/2(699)	1-1/4(32)*	

**Note:** Outlet dimensions refers to the actual opening.  
 \*For fan size F, left hand units, the "M" dimension is 3-7/8".