

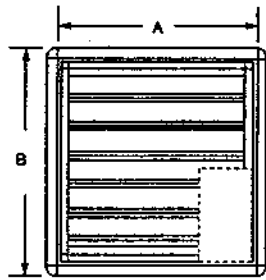
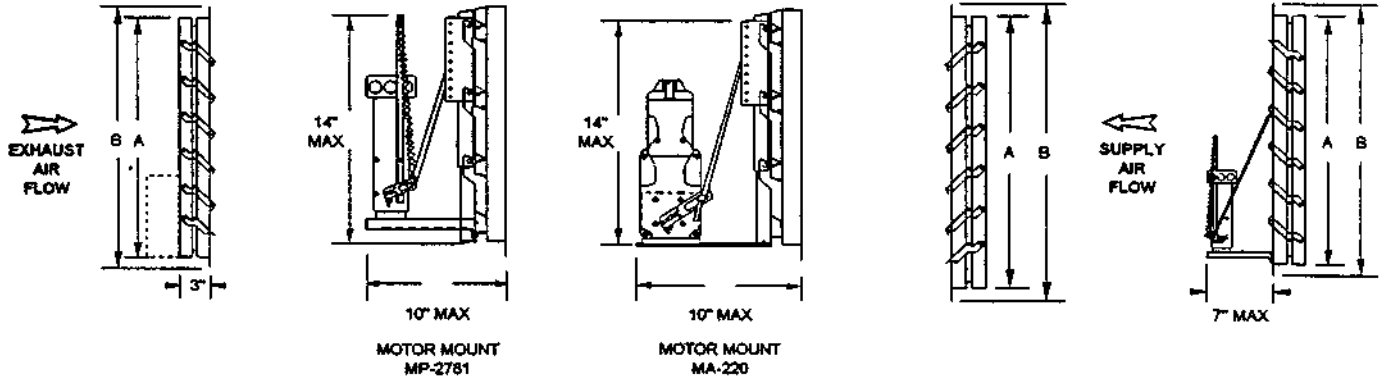
Propeller Fan Accessories - Backdraft Dampers

Exhaust: LXVAA (Gravity) — LXVAM (Motorized)

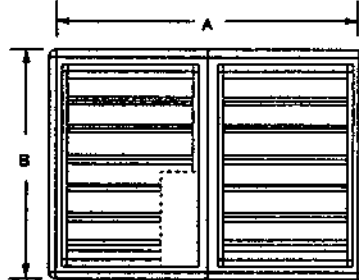
Supply: LXXAA (Gravity) — LXXAM (Motorized)

IP [English] Dimensions
(SI (Metric) on Reverse Side)

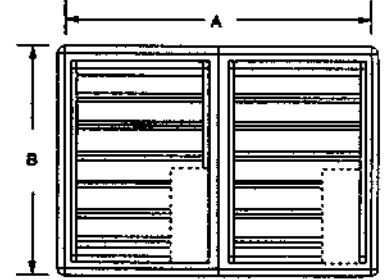
CARNES COMPANY 448 S. Main St., P. O. Box 930040, Verona, WI 53593-0040 Phone: (608)845-6411 Fax: (608)845-6504 www.carnes.com



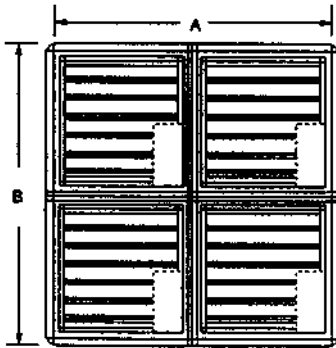
DETAIL #1



DETAIL #2



DETAIL #3



DETAIL #4

NOTES:

- (1) Do not mount fan less than 12 inches from the shutter.
- (2) Motors available in 24V, 120V, 240V & 440V.
- (3) Dampers shipped in individual cartons.
- (4) Motors and mounting hardware ship separately.
- (5) Center-pivoted dampers must be used on reversible fans.
- (6) Multiple section assemblies may require bracing to support the weight of the assembly and to hold against system pressure. *BRACING SUPPLIED BY OTHERS.*

STANDARD SPECIFICATIONS

Maximum Face Velocity: 3000 fpm.
 Temperature Limits: -40°F to 200°F (-40°C to 94°C).
 Minimum Size: 8" x 8"
 Size: Single section: 42" W x 64" H Max.

Multiple section assembly - Unlimited size.

Frame: 20 gauge galvanized steel.

Blades: .025 thick aluminum.

HD 28 gauge galvanized steel.

Seals: Extruded vinyl mechanically locked into blades.

Axles: Stainless Steel.

Linkage: Stainless steel pins, galvanized steel tie bar.

Finish: Mill.

CAUTION: Motor kits are not suitable for use in explosive or flammable areas or airflows.

Multiple section dampers are factory assembled (except 72" and larger).

For all supply applications, a rainhood and motor kit is recommended.

FAN SIZE	A SQUARE SIZE	B SQ. OD FLANGE	PANELS (Details)	MOTOR TYPE			
				EXHAUST		SUPPLY	
				TYPE	QTY	TYPE	QTY
10-12	12	14-1/2	1	MP-2781	1	MP-2781-S	1
16	16	18-1/2	1	MP-2781	1	MP-2781-S	1
18-20	20	22-1/2	1	MP-2781	1	MP-2781-S	1
24	20	27-1/2	1	MP-2781	1	MP-2781-S	1
30	32	34-1/2	1	MP-2781	1	MA-220-S	1
36	38	40-1/2	1	MA-220	1	MA-220-S	1
42	44	46-1/2	2	MA-220	1	MA-220-S	2
48	50	52-1/2	2	MA-220	1	MA-220-S	2
54	56	58-1/2	3	MA-220	2	MA-220-S	2
60	62	64-1/2	3	MA-220	2	MA-220-S	2
72	76	78-1/2	4	MA-220	4	MA-220-S	4

Heavy Duty Dampers required on all units with 7-1/2 HP motors and above.

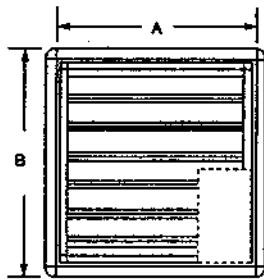
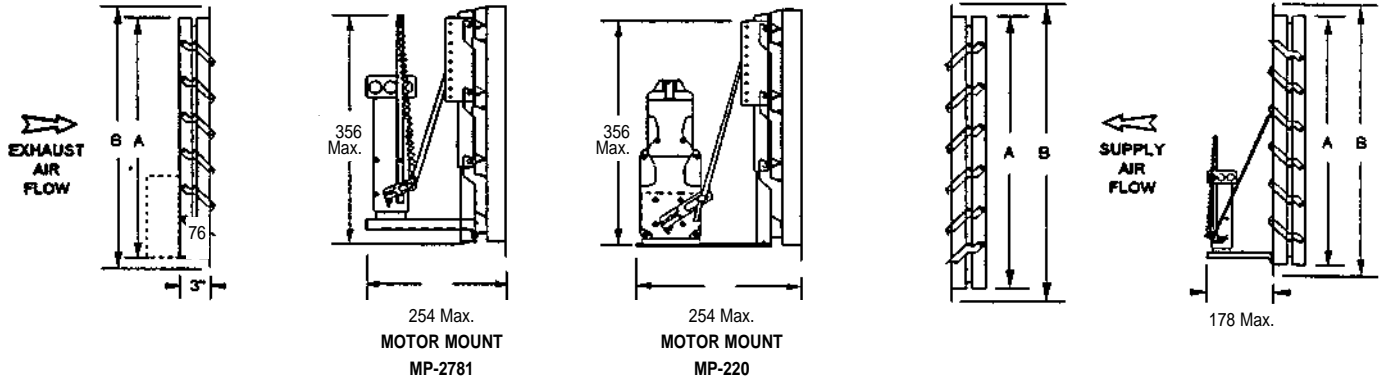
Propeller Fan Accessories - Backdraft Dampers

Exhaust: LXVAA (Gravity) — LXVAM (Motorized)

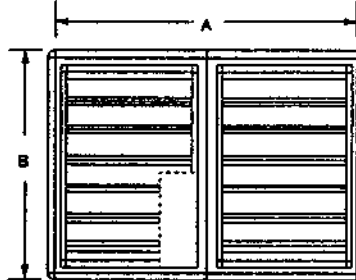
Supply: LXXAA (Gravity) — LXXAM (Motorized)

SI (Metric) Dimensions
(IP [English] on Reverse Side)

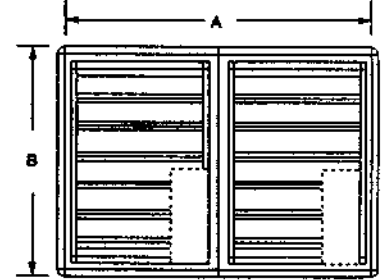
CARNES COMPANY 448 S. Main St., P. O. Box 930040, Verona, WI 53593-0040 Phone: (608)845-6411 Fax: (608)845-6504 www.carnes.com



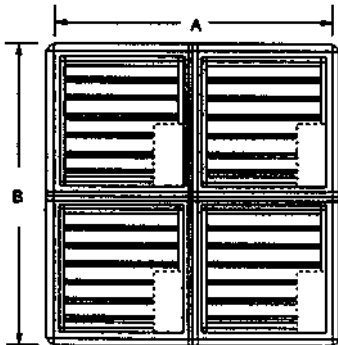
DETAIL #1



DETAIL #2



DETAIL #3



DETAIL #4

NOTES:

- (1) Do not mount fan less than 305mm from the shutter.
- (2) Motors available in 24V, 120V, 240V & 440V.
- (3) Dampers shipped in individual cartons.
- (4) Motors and mounting hardware ship separately.
- (5) Center-pivoted dampers must be used on reversible fans.
- (6) Multiple section assemblies may require bracing to support the weight of the assembly and to hold against system pressure. *BRACING SUPPLIED BY OTHERS.*

STANDARD SPECIFICATIONS

Maximum Face Velocity: 3000 fpm.
 Temperature Limits: -40°F to 200°F (-40°C to 94°C).
 Minimum Size: 203mm x 203mm.
 Size: Single section: 1067mm W x 1626mm H Max.
 Multiple section assembly - Unlimited size.
 Frame: 20 gauge galvanized steel.
 Blades: .025 thick aluminum.
 HD 28 gauge galvanized steel.
 Seals: Extruded vinyl mechanically locked into blades.
 Axles: Stainless Steel.
 Linkage: Stainless steel pins, galvanized steel tie bar.
 Finish: Mill.

CAUTION: Motor kits are not suitable for use in explosive or flammable areas or airflows.

Multiple section dampers are factory assembled (except 1829mm and larger).

For all supply applications, a rainhood and motor kit is recommended.

METRIC DIMENSIONS (LISTED IN MILLIMETERS)

FAN SIZE	A SQUARE SIZE	B SQ. OD FLANGE	PANELS (Details)	MOTOR TYPE			
				EXHAUST		SUPPLY	
				TYPE	QTY	TYPE	QTY
10-12	305	368	1	MP-2781	1	MP-2781-S	1
16	406	470	1	MP-2781	1	MP-2781-S	1
18-20	508	572	1	MP-2781	1	MP-2781-S	1
24	660	699	1	MP-2781	1	MP-2781-S	1
30	813	876	1	MP-2781	1	MA-220-S	1
36	965	1029	1	MA-220	1	MA-220-S	1
42	1118	1181	2	MA-220	1	MA-220-S	2
48	1270	1334	2	MA-220	1	MA-220-S	2
54	1422	1486	3	MA-220	2	MA-220-S	2
60	1575	1638	3	MA-220	2	MA-220-S	2
72	1930	1994	4	MA-220	4	MA-220-S	4

Heavy Duty Dampers required on all units with 7-1/2 HP motors and above.