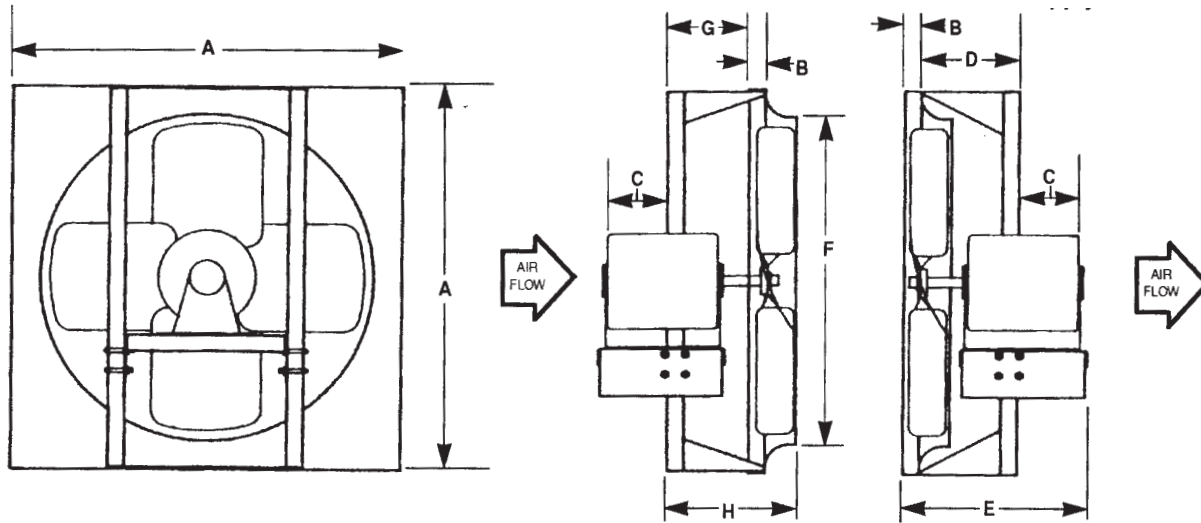


IP [English] Dimensions
(SI (Metric) on Reverse Side)

CARNES COMPANY, 448 S. Main St., P. O. Box 930040, Verona, WI. 53593-0040 Phone: 608/845-6411 Fax: 608/845-6470 carnes@carnes.com http://www.carnes.com

Model LJDB — Exhaust Model LKDB — Supply



STANDARD DIMENSIONS (LISTED IN INCHES)

Size	O. D. Panel A Sq.	B	C *	D	Max. * E	F	G	Minimum Metal Gauge ¹				Pipes	Damper Size	Ave Ship Wt. (Lbs.)
								Fan H	Motor Panel	Plate	Brackets			
10	16	1	6	6	10-3/8	10-3/8	5	8	16	12	12	1-1/4" Schedule 40 Pipe	12	30
12	16	1	6	6	10-3/8	12-3/8	5	8	16	12	12		12	30
16	20	1	6	6	11-5/8	16-3/8	5	8	16	12	12		16	37
18	24	1	6	6	11-5/8	18-3/8	5	8	16	12	12		20	40
20	24	1	7	6	11-5/8	20-3/8	5	8	16	12	12		20	50
24	30	2	10	9	21	25	4	8-3/4	16	12	12		26	80
30	36	2	10	9	21	31	4	8-3/4	16	12	12	32	100	

STANDARD FEATURES:

- All manufactured parts are G90 galvanized.

ACCESSORIES:

- FG = Front Guard
- MG = Motorside Guard
- WB = Wall Box
- WG = Wall Box with Guard

* - Varies with motor selection.

FAN NO. LOCATION	QTY	MODEL/SIZE	CFM	SP	FAN RPM	SONES	MOTOR			ACCESSORIES
							HP	ELECTRICAL	TYPE	

NOTES:

PROJECT:			ARCHITECT:		
CONTRACTOR:		DATE:	SUBMITTED BY:		ENGINEER:



SUBMITTAL SHEET

PROPELLER WALL FAN: DIRECT DRIVE

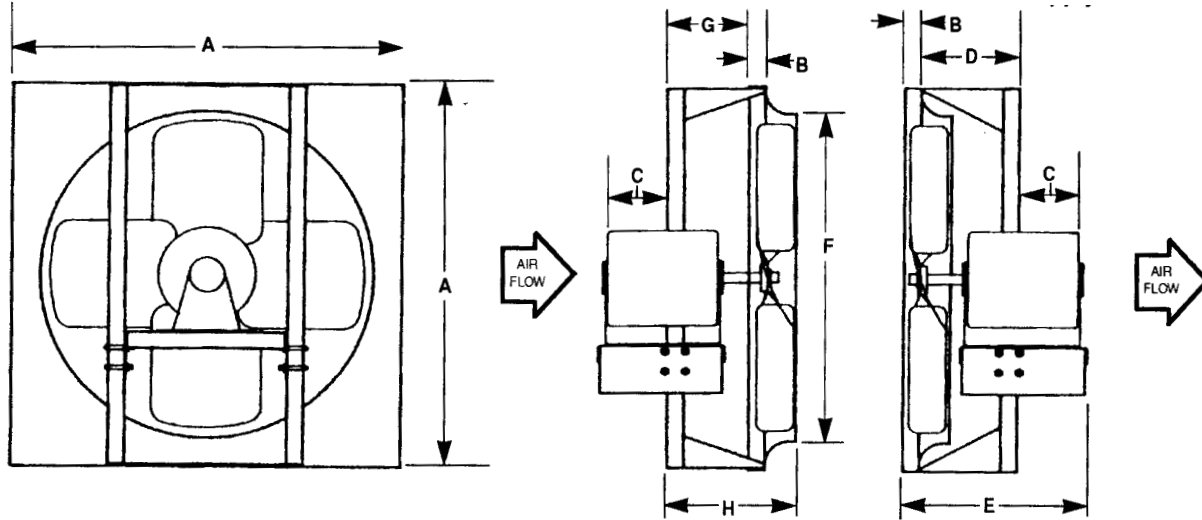
Model LJDB: EXHAUST

Model LKDB: SUPPLY

SI (Metric) Dimensions
(IP [English] on Reverse Side)

CARNES COMPANY, 448 S. Main St., P. O. Box 930040, Verona, WI. 53593-0040 Phone: 608/845-6411 Fax: 608/845-6470 carnes@carnes.com http://www.carnes.com

Model LJDB — Exhaust Model LKDB — Supply



METRIC DIMENSIONS (LISTED IN MILLIMETERS)

Size	O. D. Panel A Sq.	B	C *	D	Max. * E	F	G	Minimum Metal Gauge ¹				Pipes	Damper Size	Ave Ship Wt. (Kgs.)
								Fan H	Motor Panel	Plate	Brackets			
10	406	25	152	152	264	264	127	203	16	12	12	32 O. D. Schedule 40 Pipe	305	14
12	406	25	152	152	264	314	127	203	16	12	12		305	14
16	508	25	152	152	295	415	127	203	16	12	12		406	17
18	610	25	152	152	295	467	127	203	16	12	12		508	18
20	610	25	178	152	295	518	127	203	16	12	12		508	23
24	762	51	254	289	533	635	102	222	16	10	12		660	36
30	914	51	254	289	533	787	102	222	16	10	12	813	45	

STANDARD FEATURES:

- All manufactured parts are G90 galvanized.

* - Varies with motor selection.

ACCESSORIES:

- FG = Front Guard WB = Wall Box
MG = Motorside Guard WG = Wall Box with Guard

FAN NO. LOCATION	QTY	MODEL/SIZE	CFM	SP	FAN RPM	SONES	MOTOR			ACCESSORIES
							HP	ELECTRICAL	TYPE	

NOTES:

PROJECT:			ARCHITECT:		
CONTRACTOR:		DATE:	SUBMITTED BY:		ENGINEER: