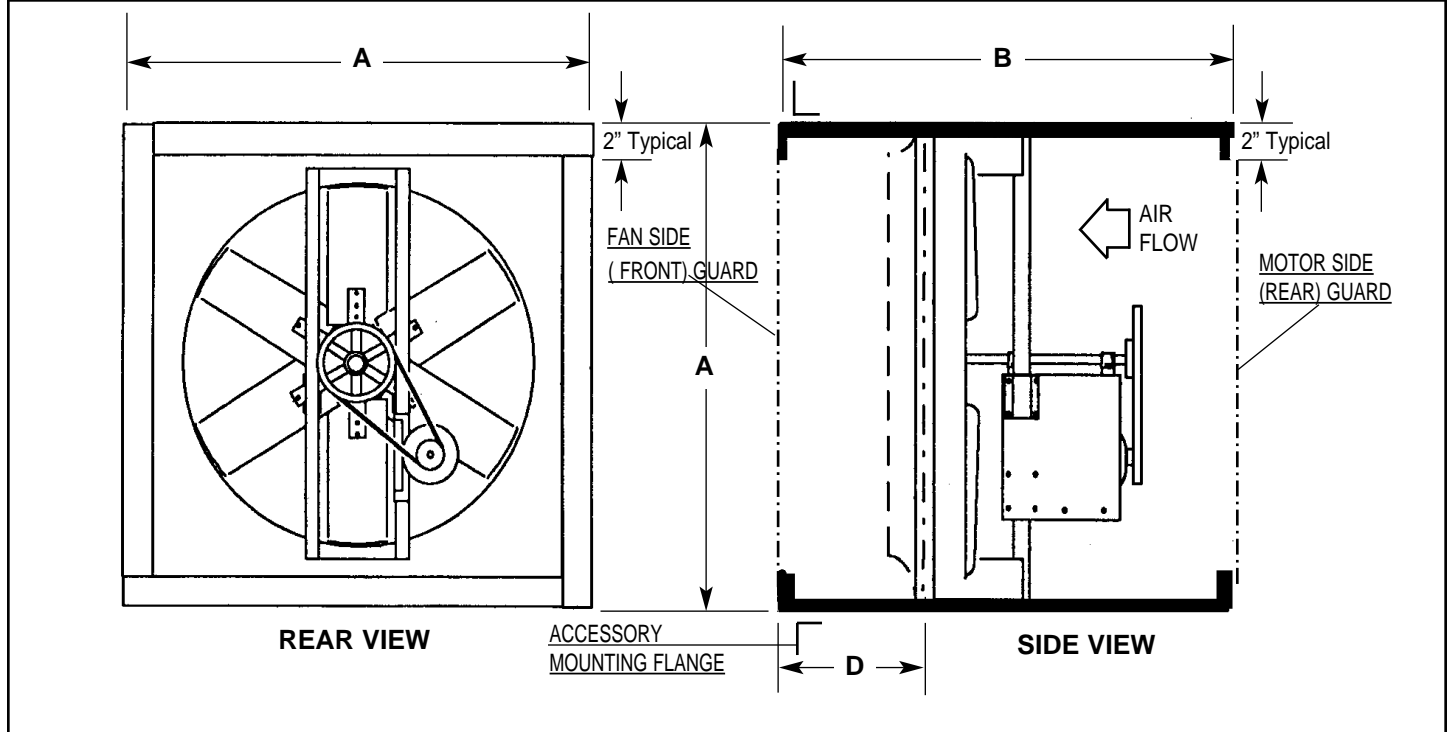


IP [English] Dimensions
SI (Metric) on Reverse Side

CARNES COMPANY 448 S. Main St., P. O. Box 930040, Verona, WI 53593-0040 Phone: (608)845-6411 Fax: (608)845-6504 www.carnes.com



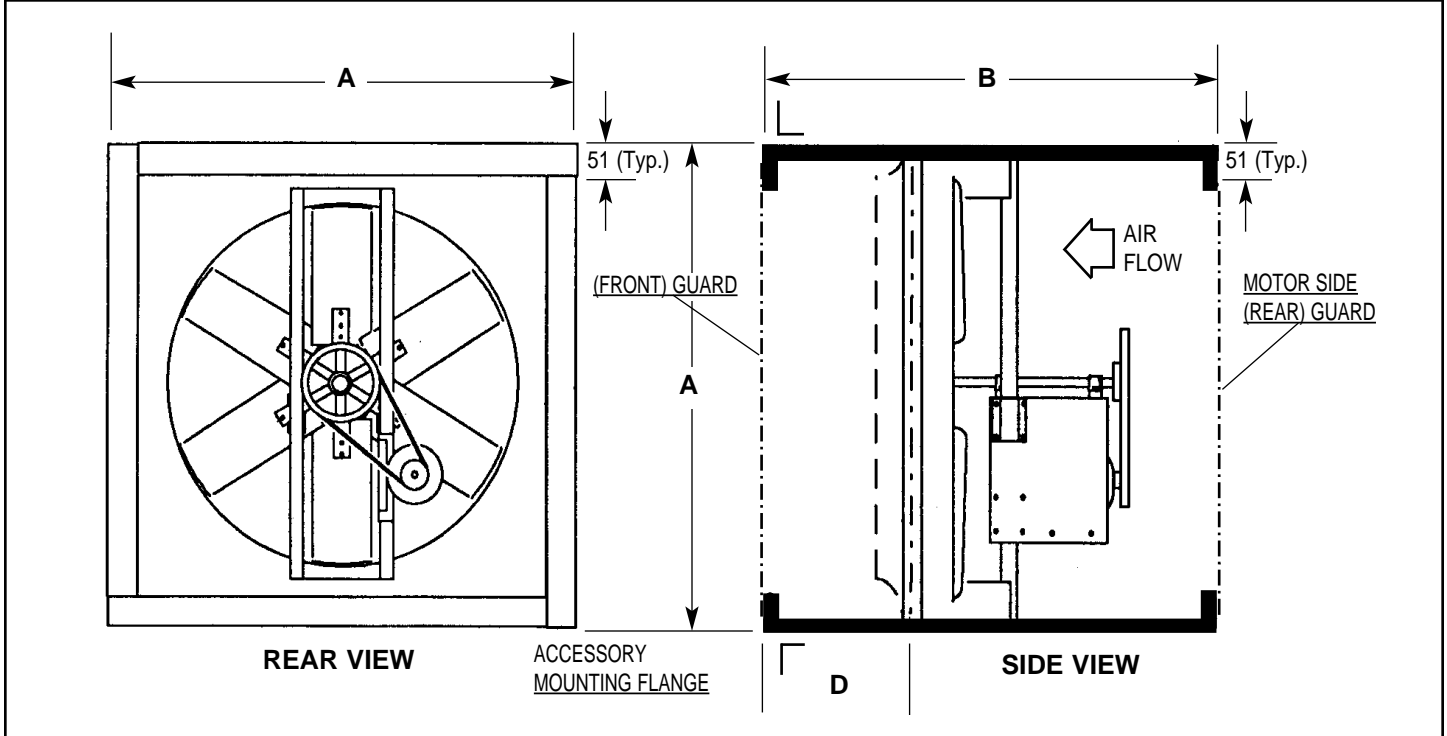
FAN SIZE	"A" SQ.	"B" DIM. LISTED IN INCHES			D REQ'D DPR CLEAR-ANCE	I. D. WALL OPN'G REQ'D	METAL GAUGES		
		LJDB LKDB	LRDA LNDA	LABA LCBA LRBA LNBA			LJDB LKDB	LRDA LNDA	LABA LCBA LRBA LNBA
		ALL HP	ALL HP 1160	ALL HP			ALL HP	ALL HP	ALL HP
10/12	17	24	—	—	8	17-1/2	20	—	—
16	21	24	—	—	8	21-1/2	20	—	—
18/20	25	24	—	—	8	25-1/2	20	—	—
24	31	32	32	44	8	31-1/2	20	20	16
30	37	32	32	44	10	37-1/2	20	16	16
36	43	—	44 (F)	44 (F)	12	43-1/2	—	16	16 (G)
42	49	—	44	44	14	49-1/2	—	16	16 (G)
48	55	—	44	44	16	55-1/2	—	16	16
54	61	—	44	44	18	61-1/2	—	14	14
60	67	—	44	44	20	67-1/2	—	14	14
72	81	—	44	44	24	81-1/2	—	14	14

Wall housings are used to facilitate mounting fans with their accessories in a wall. The housing may be positioned inside or outside the building per the customer's preference or application. Typically, the wall housing for exhaust applications incorporates a damper on the exterior of the building and a guard on the interior of the building. On supply applications, a rain hood is highly recommended to prevent moisture from being pulled into the building.

- NOTES:**
- Dimensions include fastener heads (approximately 5/8" extra).
 - Housing ship assembled with fan unless ordered K. D.
 - Standard materials G90 galvanized. For optional.
 - Angle mounting flanges ship loose and are an option.
 - CAUTION: Housing position when mounted may require additional support.
 - Data applies to exhaust and supply fan models unless shown otherwise.
 - Wire Guards: Standard OSHA is 1/2" x 1", 16 ga. galvanized. wire.
 OSHA H. D. is 1/2" x 1/2" expanded metal aluminum finish.
 Non-OSHA H. D. is 3/4" x 3/4" expanded metal aluminum finish

SI (Metric) Dimensions
IP [English] on Reverse Side

CARNES COMPANY 448 S. Main St., P. O. Box 930040, Verona, WI 53593-0040 Phone: (608)845-6411 Fax: (608)845-6504 www.carnes.com



FAN SIZE	"A" SQ.	"B" DIM. LISTED IN MILLIMETERS			D REQ'D DPR CLEAR-ANCE	I. D. WALL OPN'G REQ'D	METAL GAUGE		
		LJDB LKDB ALL HP	LRDA LNDA ALL HP 1160	LCBA LRBA LNBA ALL HP			LJDB LKDB ALL HP	LRDA LNDA ALL HP	LABA LCBA LRBA LNBA ALL HP
10/12	432	610	—	—	203	445	20	—	—
16	533	610	—	—	203	546	20	—	—
18/20	635	610	—	—	203	648	20	—	—
24	787	813	813	1118	203	800	20	20	16
30	940	813	813	1118	254	953	20	16	16
36	1092	—	1118(F)	1118(F)	305	1105	—	16	16(G)
42	1245	—	1118	1118	356	1257	—	16	16(G)
48	1399	—	1118	1118	406	1410	—	14	16
54	1549	—	1118	1118	457	1562	—	14	14
60	1702	—	1118	1118	508	1715	—	14	14
72	2057	—	1118	1118	610	2070	—	14	14

Wall housings are used to facilitate mounting fans with their accessories in a wall. The housing may be positioned inside or outside the building per the customer's preference or application. Typically, the wall housing for exhaust applications incorporates a damper on the exterior of the building and a guard on the interior of the building. On supply applications, a rain hood is highly recommended to prevent moisture from being pulled into the building.

- NOTES:**
- Dimensions include fastener heads (approximately 37.8mm extra).
 - Housing ship assembled with fan unless ordered K. D.
 - Standard materials G90 galvanized. For optional.
 - Angle mounting flanges ship loose and are an option.
 - CAUTION: Housing position when mounted may require additional support.
 - Data applies to exhaust and supply fan models unless shown otherwise.
 - Wire Guards: Standard OSHA is 12.7mm x 25.4mm, 16 ga. galvanized. wire.
OSHA H. D. is 12.7mm x 12.7mm expanded metal aluminum finish.
Non-OSHA H. D. is 19mm x 19mm expanded metal aluminum finish