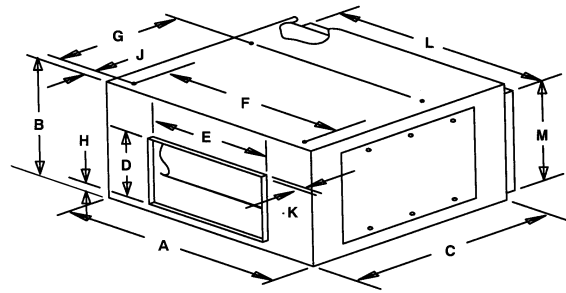


IP [English] Dimensions
SI (Metric) on Reverse Side

CARNES COMPANY, 448 S. Main St., P. O. Box 930040, Verona, WI. 53593-0040 Phone: 608/845-6411 Fax: 608/845-6470 E-Mail: carnes@carnes.com www.carnes.com _____

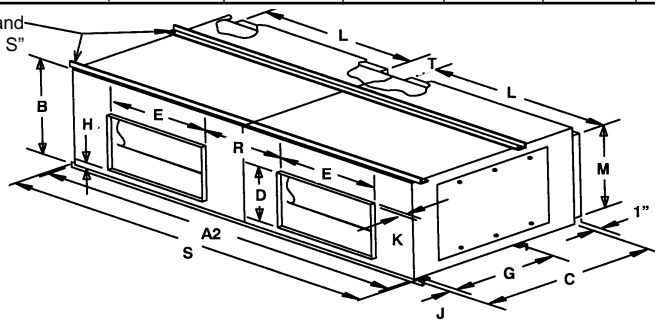


DIMENSIONS [Inches] — [Single Blower Units]

Note: Weight shown is less motor and drive

VDBA	A	B	C	D	E	F	G	H	J	K	L	M	WT. [Lbs.]
07	18	15-3/8	23	8-1/4	9-3/16	14-1/2	9-5/8	1-1/4	1-1/4	7/8	15-7/8	13-3/8	46
09	21	18	23	10-1/4	11-13/16	17-1/2	11-3/4	1-1/4	1-3/4	7/8	19	16	58
10	22-1/4	20	24-3/4	11-3/8	13-1/8	18-3/4	13-3/8	1-1/4	1-3/4	7/8	20-1/4	18	69
12	27	23	27-1/2	13-7/16	15-5/8	23-1/2	16-1/8	1-1/4	1-3/4	7/8	25	21	89
15	33-1/2	28	32	15-7/8	18-5/8	28	19-1/2	2-5/8	1-3/4	7/8	30-1/2	25	175
18	41-1/2	34	44	19-5/8	22-5/8	35	24	2-3/4	1-3/4	1-1/8	35-3/8	31-5/8	205

Structural Steel Angle Twinning Rail. Top and Bottom with 5/8" Mounting Holes on "G & S" Dimension Centres.



DIMENSIONS [Inches] — [Twin Blower Units]

Note: Weight shown is less motor and drive

VDBA	A2	B	C	D	E	G	H	J	K	L	M	R	S	T	WT. [Lbs.]
27	36	15-3/8	23	8-1/4	9-3/16	9-5/8	1-1/4	1-1/4	7/8	15-7/8	13-3/8	8-13/16	38-1/4	2	145
29	42	18	23	10-1/4	11-13/16	11-3/4	1-1/4	1-3/4	7/8	19	16	9-3/16	44-1/4	2	163
30	44-1/2	20	24-3/4	11-3/8	13-1/8	13-3/8	1-1/4	1-3/4	7/8	20-1/4	18	9-1/8	46-3/4	2	190
32	54	23	27-1/2	13-7/16	15-5/8	16-1/8	1-1/4	1-3/4	7/8	25	21	11-3/8	56-1/4	2	240
35	67	28	32	15-7/8	18-5/8	19-1/2	2-5/8	1-3/4	7/8	30-1/2	25	14-7/8	69-1/4	3	345

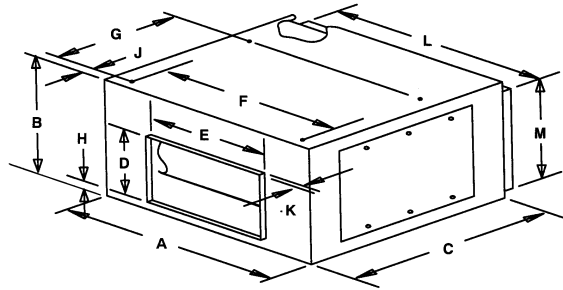
FAN NO. LOCATION	QTY	MODEL/SIZE	CFM	SP	FAN RPM	SONES	MOTOR			ACCESSORIES
							HP	ELECTRICAL	TYPE	

NOTES

PROJECT:	ARCHITECT:
CONTRACTOR:	ENGINEER:
DATE:	SUBMITTED BY:

SI (Metric) Dimensions
IP [English] on Reverse Side

CARNES COMPANY, 448 S. Main St., P. O. Box 930040, Verona, WI. 53593-0040 Phone: 608/845-6411 Fax: 608/845-6470 E-Mail: carnes@carnes.com www.carnes.com _____

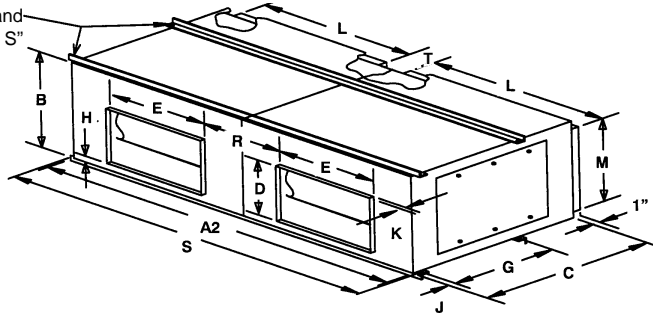


DIMENSIONS (Millimeters) — (Single Blower Units)

Note: Weight shown is less motor and drive

VDBA	A	B	C	D	E	F	G	H	J	K	L	M	WT. (Kg)
07	457	391	584	210	233	368	244	32	32	22	403	340	21
09	533	457	584	260	300	445	298	32	44	22	483	406	26
10	565	508	629	289	333	476	340	32	44	22	514	457	31
12	686	584	699	341	397	597	410	32	44	22	635	533	40
15	851	711	813	403	473	711	495	67	44	22	775	635	79
18	1054	864	1118	498	575	889	610	70	44	29	899	803	93

Structural Steel Angle Twinning Rail. Top and Bottom with 15.5mm Mounting Holes on "G & S" Dimension Centres.



DIMENSIONS (Millimeters) — (Twin Blower Units)

Note: Weight shown is less motor and drive

VDBA	A2	B	C	D	E	G	H	J	K	L	M	R	S	T	WT. (Kg)
27	914	391	584	210	233	244	32	32	22	403	340	224	972	51	66
29	1067	457	584	260	300	298	32	44	22	483	406	233	1124	51	74
30	1130	508	629	289	333	340	32	44	22	514	457	232	1187	51	86
32	1372	584	699	341	397	410	32	44	22	635	533	289	1429	51	109
35	1702	711	813	403	473	495	67	44	22	775	635	378	1759	76	156

FAN NO. LOCATION	QTY	MODEL/SIZE	CFM	SP	FAN RPM	SONES	MOTOR			ACCESSORIES
							HP	ELECTRICAL	TYPE	

NOTES

PROJECT:	ARCHITECT:
CONTRACTOR:	ENGINEER:
DATE:	SUBMITTED BY: